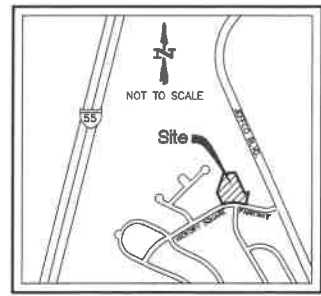


A COMMERCIAL SITE PLAN FOR ROCK TOWNSHIP AMBULANCE DISTRICT

A TRACT OF LAND BEING ALL OF PARCEL 4C
OF "HICKORY SQUARE COMMERCIAL PARCELS 4B AND 4C A MINOR SUBDIVISION"
PLAT BOOK 176 PAGE 15
IN U.S. SURVEY 2991
TOWNSHIP 43 NORTH, RANGE 6 EAST
CITY OF ARNOLD
JEFFERSON COUNTY, MISSOURI



Vicinity Map

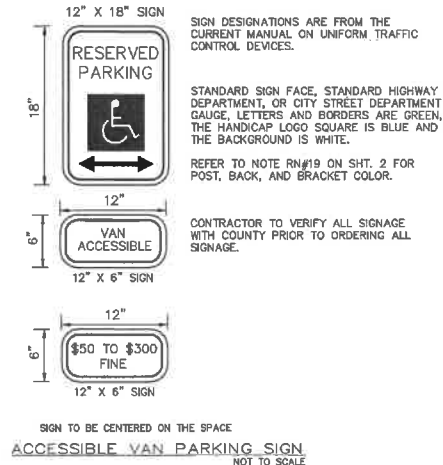
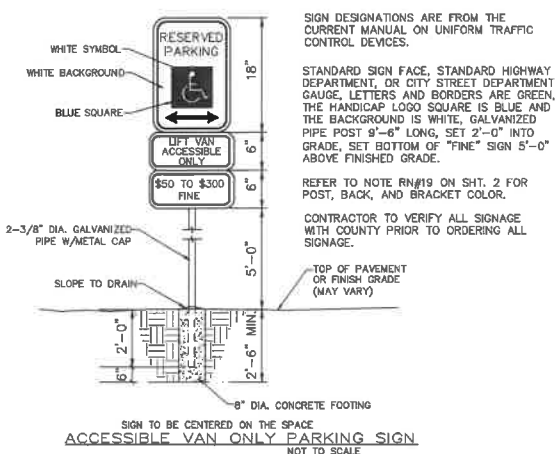
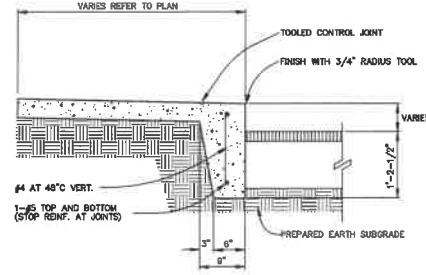
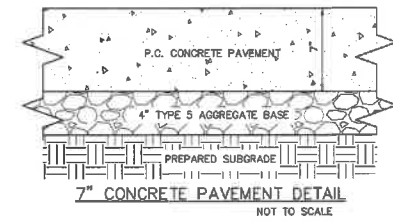
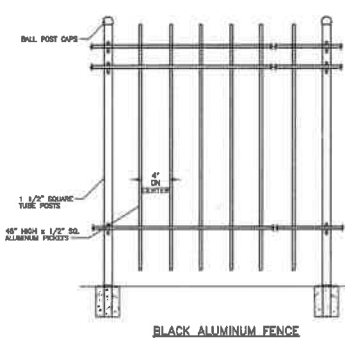
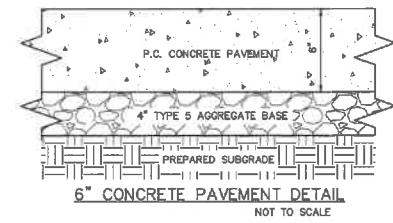
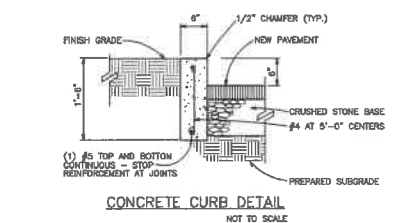
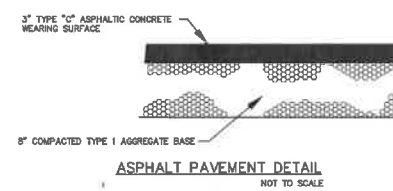
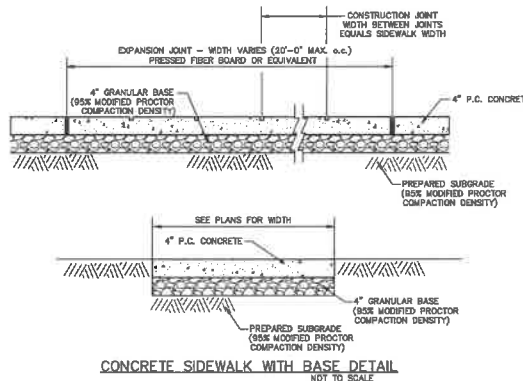
Legend	
	CURB/AREA INLET
	STORM SEWER MANHOLE
	SANITARY SEWER MANHOLE
	AC UNIT
	TRAFFIC CONTROL BOX
	TELEPHONE BOX
	ELECTRIC METER
	WATER METER
	WATER VALVE
	FIRE HYDRANT
	YARD DRAIN
	CLEANOUT
	DOWNSPOUT
	SIGN
	BUSH
	TREE
	— GAS — BURIED GAS
	— W — BURIED WATER
	— T — BURIED TELEPHONE
	— SAN — SANITARY SEWER
	— X — FENCE LINE
	TBR TO BE REMOVED
	UIP USE IN PLACE

Development Notes:

- AREA OF TRACT: 2.182 ACRES
- THIS PROPERTY IS CURRENTLY LISTED UNDER THE FOLLOWING IN THE JEFFERSON COUNTY ASSESSORS OFFICE:
PARCEL ID: 01-8.0-32.0-2-002-017
OWNER: ROCK TOWNSHIP AMBULANCE DISTRICT
6707 SAINT LUKES CHURCH ROAD
BARNHART, MISSOURI 63012
(836) 298-5068
- SITE ADDRESS: 2455 HICKORY SQUARE PARKWAY
ARNOLD, MISSOURI 63010
(REPLACES HOUSE AT 1800 LONEDELL ROAD)
- EXISTING ZONING: C-3 COMMERCIAL DISTRICT (CITY OF ARNOLD)
- PROPOSED USE: AMBULANCE DISTRICT BASE STATION
(APPROXIMATELY 12 AMBULANCE CALLS/TRIPS PER DAY)
THIS AMBULANCE HOUSE IS REPLACING AN EXISTING AMBULANCE HOUSE.
- THIS PROPERTY IS SERVED BY THE FOLLOWING UTILITIES:
AMEREN MISSOURI ELECTRIC 636-671-6151
CHARTER COMMUNICATIONS 888-438-2427
AT&T DISTRIBUTION 314-289-3782
SPIRE INCORPORATED 314-522-2287
JEFFERSON COUNTY PWS# #1 (WATER) 636-298-0659
MISSOURI AMERICAN WATER (SEWER) 866-430-0820
ROCK COMMUNITY FIRE PROTECTION DISTRICT 636-298-2211
- YARD AND SETBACK REQUIREMENTS:
FRONT YARD = 50 FEET
SIDE YARD = 15 FEET
REAR YARD = 15 FEET
MAXIMUM HEIGHT = 50 FEET
- SITE COVERAGE:
SITE = 95,058 SQ. FT. (2.82 ACRES)
TOTAL BUILDING = 7,188 SQ. FT. = 8%
TOTAL PAVEMENT = 19,227 SQ. FT. = 20%
TOTAL GREENSPACE = 68,643 SQ. FT. = 72%
- PARKING CALCULATIONS:
AMBULANCE DISTRICT: 1 SPACE PER EMPLOYEE ON MAX. SHIFT
6 EMPLOYEES X 1 SPACE = 6 SPACES
TOTAL SPACES REQUIRED = 8 PARKING SPACES
TOTAL SPACES PROVIDED = 14 PARKING SPACES (INCLUDES 2 ACCESSIBLE SPACES)
- TO DETERMINE THE LOCATION OF FLOOD DESIGNATIONS AND BOUNDARIES, WE DETERMINED THE HORIZONTAL LOCATION OF THIS TRACT OF LAND BY SCALING THE FOLLOWING FLOOD INSURANCE RATE MAP (FIRM): JEFFERSON COUNTY, MISSOURI AND INCORPORATED AREAS, MAP NUMBER 26099C0117E, WITH AN EFFECTIVE DATE OF APRIL 5, 2006.
COMMUNITY: CITY OF ARNOLD
NUMBER: 26098
PANEL: 0117
SUFFIX: E
BY EXPRESS REFERENCE TO THIS MAP AND ITS LEGEND, THIS TRACT OF LAND IS INDICATED TO BE WITHIN ZONE X - AREAS DETERMINED TO BE OUTSIDE THE 0.2% ANNUAL CHANCE FLOODPLAIN.
THE EVALUATION PROVIDED IN THIS NOTE IS RESTRICTED TO SIMPLY INDICATING THE APPARENT HORIZONTAL LOCATION OF THE PROPERTY WITH RESPECT TO THE FEATURES DISPLAYED ON THE MAP. NO FIELD STUDY OF THE DRAINAGE CHARACTERISTICS TO WHICH THIS PROPERTY MAY BE SUBJECT TO HAS BEEN CONDUCTED AND NO REPRESENTATION CONCERNING THE INSURABILITY OF THIS PROPERTY OR THE POTENTIAL SUSCEPTIBILITY OF THIS PROPERTY TO FLOODING HAS BEEN MADE. BAY ENGINEERING MAKES NO REPRESENTATION CONCERNING THE ACCURACY OF THE ABOVE REFERENCED FIRM MAP WHICH INCLUDES A NOTE THAT "THIS MAP IS FOR USE IN ADMINISTERING THE NATIONAL FLOOD INSURANCE PROGRAM. IT DOES NOT NECESSARILY IDENTIFY ALL AREA SUBJECT TO FLOODING, PARTICULARLY FROM LOCAL DRAINAGE SOURCES OF SMALL SIZE."
THIS FLOOD ZONE DETERMINATION AND THE FLOOD ZONE LIMITS SHOWN HEREON, IF ANY, WERE MADE USING FEMA INFORMATION WHICH WAS AVAILABLE ON THE DATE THIS SURVEY WAS SIGNED AND SEALED.
- BASIS OF BEARINGS IS THE MISSOURI COORDINATE SYSTEM OF 1983, EAST ZONE (GRID NORTH).
- REFERENCE BENCHMARK: SURVEY DISK SET IN TOP OF CONCRETE MONUMENT AND MARKED "SL-86 1992".
THE OBSERVED VERTICAL CHECK STATION UTILIZED IS LISTED ON WWW.NGSA.GOV AS DESIGNATION "SL 86" WITH A PID OF A48727 AND A PUBLISHED ELEVATION OF 441.90 (NAVD88).
DESCRIPTION: STATION, AZIMUTH MARKS AND REFERENCE TIES THE STATION IS A STANDARD DNR GRS ALUMINUM DISK STAMPED—SL-86, 1992 SET IN A 12 IN. DIAMETER CONCRETE POST THE UNDERGROUND STATIONS A STANDARD DNR GRS ALUMINUM DISK STAMPED SL-86U, 1992 SET IN A MASS OF CONCRETE. THE STATION IS IN THE SE ANGLE OF 1-55 EXIT 193 (MEMARIC BOTTOM ROAD). IT IS 59.9 FT (18.3 M) SOUTHWESTERLY OF THE NORTH POST OF THE EAST R/W FENCE, 2 FT (0.6 M) WEST OF THE SAME FENCE, 59.0 FT (18.0 M) EASTERLY FROM A PAINT MARK ON THE EAST SIDE OF THE NORTHBOUND OFF RAMP, 53.7 FT (16.4 M) EAST OF A WHITE PLASTIC DELINEATOR POST, 62.0 FT (18.9 M) SOUTH OF A YIELD SIGN, 54.3 FT (16.6 M) SE OF THE EDGE OF PAVEMENT, AND 1.15 FT (0.35 M) SOUTH OF A WITNESS POST.
SITE BENCHMARK (NAVD 88) - "O" IN "OPEN" ON FIRE HYDRANT NEAR SOUTHWEST CORNER OF SUBJECT PROPERTY (ELEVATION=506.02).
- ALL CONSTRUCTION METHODS AND PRACTICES SHALL CONFORM WITH OSHA AND CITY OF ARNOLD STANDARDS.
- ALL NEW LIGHTING SHALL BE DOWNCAST LIGHTS CONSISTENT WITH CITY OF ARNOLD ZONING ORDINANCE, SECTION 405.330.A.6. A PHOTOMETRIC PLAN SHALL BE SUBMITTED WITH CONSTRUCTION DOCUMENTS.
- UNDERGROUND UTILITIES HAVE BEEN PLOTTED FROM AVAILABLE INFORMATION AND THEREFORE THEIR LOCATIONS SHALL BE CONSIDERED APPROXIMATE ONLY. THE VERIFICATION OF THE LOCATION OF ALL UNDERGROUND UTILITIES, EITHER SHOWN OR NOT SHOWN ON THESE PLANS SHALL BE THE RESPONSIBILITY OF THE CONTRACTOR, AND SHALL BE LOCATED PRIOR TO ANY GRADING OR CONSTRUCTION OF THE IMPROVEMENTS.
- ALL NEW UTILITIES SHALL BE LOCATED UNDERGROUND.
- TRASH DISPOSAL SHALL BE RESIDENTIAL STYLE CURB PICKUP AND WILL ONLY BE PLACED OUTDOORS ON THE DAY OF TRASH PICKUP.
- PROPOSED SIGNAGE REQUIRES A SEPARATE PERMIT BY CITY OF ARNOLD. NO GROUND MOUNTED SIGNS ARE PROPOSED.
- DETENTION IS PROVIDED BY AN EXISTING DETENTION BASIN LOCATED TO THE NORTH IN COMMON ROAD.
- THIS PLAN IS PRELIMINARY AND NOT APPROVED FOR CONSTRUCTION.

Sheet Index

C1	COVER SHEET
C2	SITE PLAN



A COMMERCIAL SITE PLAN FOR
ROCK TOWNSHIP AMBULANCE DISTRICT
 2455 HICKORY SQUARE PARKWAY
 ARNOLD, JEFFERSON COUNTY, MISSOURI, 63010



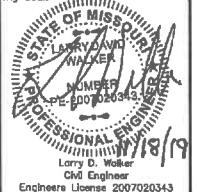
**ENGINEERING
PLANNING
SURVEYING**

221 Point West Blvd.
St. Charles, MO 63301
636-928-5568
FAX 636-928-1718

Box Engineering Company, Inc.
Missouri State Certificate of Authority
Engineering #00655
Missouri State Certificate of Authority
Surveying #00144

REVISIONS		
NO.	DATE	DESCRIPTION
11-18-19		CITY COMMENTS

DISCLAIMER OF RESPONSIBILITY
I hereby disclaim any responsibility for all other drawings, specifications, estimates, reports or other documents or instruments relating to or intended to be used for any part or parts of the architectural or engineering project or survey other than those authorized by my seal.







10-14-19
DATE
19-17730A
PROJECT NUMBER
17730A PRE.DWG
FILE NAME
RKC
DRAWN
RKC LDW
DESIGNED CHECKED

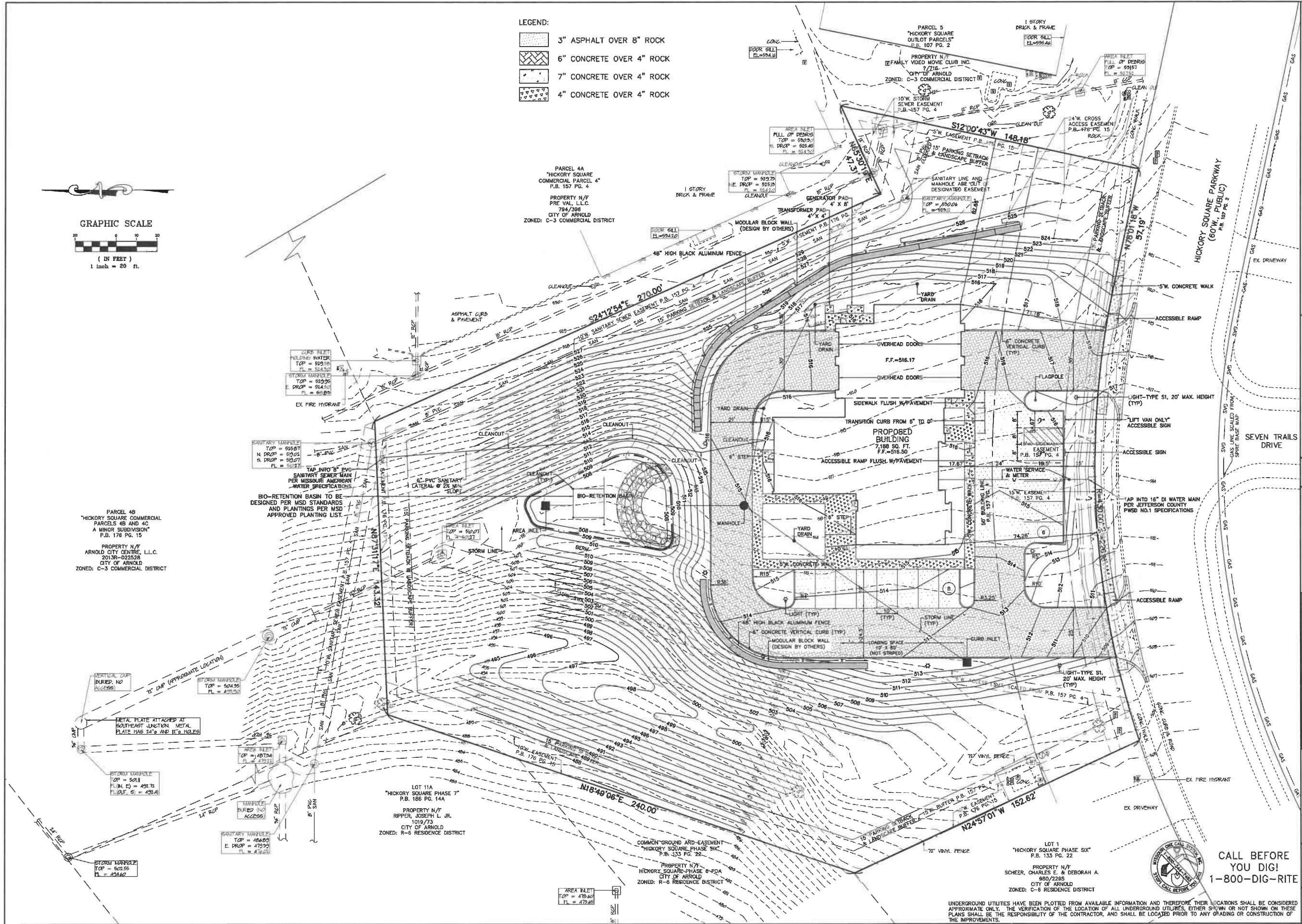
COVER SHEET
C-1



CALL BEFORE
YOU DIG!
1-800-DIG-RITE

- LEGEND:**
-  3" ASPHALT OVER 8" ROCK
 -  6" CONCRETE OVER 4" ROCK
 -  7" CONCRETE OVER 4" ROCK
 -  4" CONCRETE OVER 4" ROCK

GRAPHIC SCALE



A COMMERCIAL SITE PLAN FOR
ROCK TOWNSHIP AMBULANCE DISTRICT
 2455 HICKORY SQUARE PARKWAY
 ARNOLD, JEFFERSON COUNTY, MISSOURI, 63010



**ENGINEERING
 PLANNING
 SURVEYING**

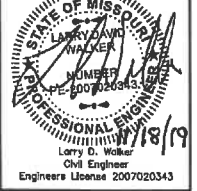
221 Point West Blvd.
 St. Charles, MO 63301
 636-628-5558
 FAX 628-1718

Box Engineering Company, Inc.
 Missouri State Certificate of Authority
 Engineering #00655
 Missouri State Certificate of Authority
 Surveying #00144

REVISIONS

NO.	DATE	DESCRIPTION
11-18-19		CITY COMMENTS

DISCLAIMER OF RESPONSIBILITY
 I hereby disclaim any responsibility for all other drawings, specifications, estimates, reports or other documents or instruments relating to or intended to be used for any part or parts of the architectural or engineering project or survey other than those submitted by my seal.

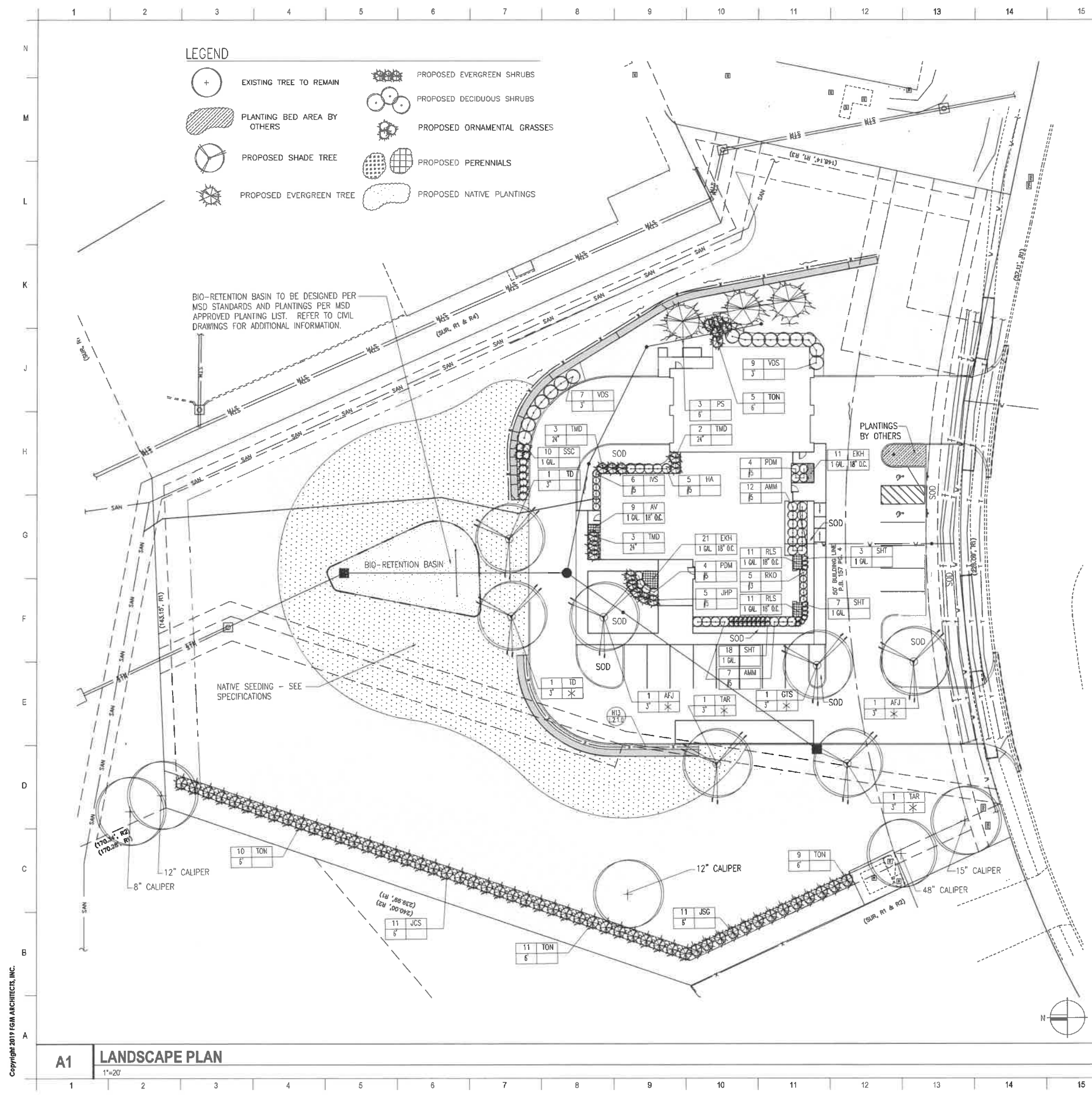


10-14-19
 DATE
 19-17730A
 PROJECT NUMBER
 17730A PRE.DWG
 FILE NAME
 RKC
 DRAWN
 RKC LDW
 DESIGNED CHECKED

CALL BEFORE
 YOU DIG!
 1-800-DIG-RITE

SITE PLAN
C-2

UNDERGROUND UTILITIES HAVE BEEN PLOTTED FROM AVAILABLE INFORMATION AND THEREFORE THEIR LOCATIONS SHALL BE CONSIDERED APPROXIMATE ONLY. THE VERIFICATION OF THE LOCATION OF ALL UNDERGROUND UTILITIES, EITHER SHOWN OR NOT SHOWN ON THESE PLANS SHALL BE THE RESPONSIBILITY OF THE CONTRACTOR, AND SHALL BE LOCATED PRIOR TO ANY GRADING OR CONSTRUCTION OF THE IMPROVEMENTS.



LEGEND

	EXISTING TREE TO REMAIN		PROPOSED EVERGREEN SHRUBS
	PLANTING BED AREA BY OTHERS		PROPOSED DECIDUOUS SHRUBS
	PROPOSED SHADE TREE		PROPOSED ORNAMENTAL GRASSES
	PROPOSED EVERGREEN TREE		PROPOSED PERENNIALS
			PROPOSED NATIVE PLANTINGS

BIO-RETENTION BASIN TO BE DESIGNED PER MSD STANDARDS AND PLANTINGS PER MSD APPROVED PLANTING LIST. REFER TO CIVIL DRAWINGS FOR ADDITIONAL INFORMATION.

NATIVE SEEDING - SEE SPECIFICATIONS

PLANT LIST

KEY	QUANTITY	BOTANIC NAME	COMMON NAME	SIZE	REMARKS
DECIDUOUS SHADE TREES					
AFJ	2	ACER F. 'SPICATA'	AUTUMN BLAZE FREEMAN MAPLE	3"	BB
FRS	1	QUERCUS T. 'STURBIA'	STURBIA HONEYLOCUST	3"	BB
TD	2	TAXODIUM DISTICHUM	SWAMP CYPRESS	3"	BB (1)
TAR	1	TILIA A. 'REINOLDI'	REDWOOD AMERICAN LINDEN	3"	BB
EVERGREEN TREES					
JCS	11	JUNIPERUS C. 'SPARTAN'	SPARTAN JUNIPER	6"	BB
JCS	11	JUNIPERUS C. 'SPARTAN'	SPARTAN JUNIPER	6"	BB
PS	1	PRUNUS SPINOSA	WHITENUT	6"	BB (1) (2)
TON	35	TAXUS O. 'NORGA'	DWARF GRIFFIN AMERICAN ARBORVITAE	6"	BB
LARGE DECIDUOUS SHRUBS					
YVS	16	YUCCA FILIFOLIA 'STANLEYA'	CHICAGO LITTLE AGAVEWOOD YUCCA	4"	CONTAINER
SMALL DECIDUOUS SHRUBS					
AMM	19	ARISAEMA H. 'WORTHON'	IRIDESCENT BLACK CHOKERBERRY	#5	CONTAINER
HA	5	HYDRANGEA A. 'ANNABELLE'	ANNABELLE HYDRANGEA	#5	CONTAINER
YVS	6	YUCCA FILIFOLIA 'STANLEYA'	LITTLE LEAF YUCCA	#5	CONTAINER
PDM	8	PHYSOCARPUS O. 'DIANA MAY'	LITTLE LEAF AMURHART	#5	CONTAINER
EVERGREEN SHRUBS					
JHP	5	JUNIPERUS H. 'PLUMOSA COMPACTA VARIATION'	YONKONAN ANDORRA JUNIPER	#5	CONTAINER
TAR	8	TAXUS M. 'DENSATOPUS'	DANUS FEN	2"	BB
PERENNIALS, SHRUB ROSES & ORNAMENTAL GRASSES					
YVS	1	YUCCA FILIFOLIA 'STANLEYA'	YUCCA AGAVE	1 GAL	18" D.C.
YVS	33	YUCCA FILIFOLIA 'STANLEYA'	YUCCA AGAVE	1 GAL	18" D.C.
YVS	6	YUCCA FILIFOLIA 'STANLEYA'	YUCCA AGAVE	1 GAL	18" D.C.
YVS	22	YUCCA FILIFOLIA 'STANLEYA'	YUCCA AGAVE	1 GAL	18" D.C.
YVS	10	YUCCA FILIFOLIA 'STANLEYA'	YUCCA AGAVE	1 GAL	18" D.C.
YVS	28	YUCCA FILIFOLIA 'STANLEYA'	YUCCA AGAVE	1 GAL	18" D.C.

MATERIAL SCHEDULE

KEY	QUANTITY	MATERIAL	REMARKS
AS STD.	1	ASBESTOS - 3/4" THICK TYP. TALL FIBRE / 3/4" KENTUCKY BLUEGRASS MIX	SEE SPECIFICATIONS
420 S.F.	1	SOD - 420 S.F. TALL FIBRE TYP. TALL FIBRE / 3/4" KENTUCKY BLUEGRASS MIX	SEE SPECIFICATIONS
31 CY.	1	MULCH	SHREDDER HARDWOOD
4 T.	1	COMPOST	MUSHROOM COMPOST
15,000 S.F.	1	BIO-RETENTION MATING PLANTING	REFER TO CIVIL DRAWINGS
15,000 S.F.	1	BIO-RETENTION MATING PLANTING	REFER TO CIVIL DRAWINGS
200 S.F.	1	COMPACTED STONE OVER FILTER FABRIC	SEE DETAIL H13 / L1.10
4 L.F.	1	STEEL EDGING	SEE DETAIL H13 / L1.10

J16 MATERIAL SCHEDULES
N.T.S.

- GENERAL NOTES**
- CONTRACTOR SHALL VERIFY LOCATIONS OF ALL ABOVE-GRADE AND UNDERGROUND UTILITIES PRIOR TO DIGGING. CONTACT 1-800-DIG-RITE.
 - PLANTING BEDS SHALL BE ELEVATED SLIGHTLY TO PROVIDE FOR PROPER DRAINAGE. ALL GRADING SHALL PROVIDE SLOPES WHICH ARE SMOOTH, CONTINUOUS AND HAVE POSITIVE DRAINAGE IN ALL AREAS. SHOULD THE LANDSCAPE CONTRACTOR ENCOUNTER DRAINAGE PROBLEMS WHICH MAY BE DETRIMENTAL TO THE GROWTH OF THE SPECIFIED PLANT MATERIALS, THE OWNER SHALL BE NOTIFIED ACCORDINGLY, PRIOR TO INSTALLATION.
 - PLANT MATERIAL SHALL BE NURSERY GROWN AND BE EITHER BALL AND BURLAPPED OR CONTAINER GROWN. SIZES INDICATED ON PLANT LIST REPRESENT MINIMUM REQUIREMENTS. THE REQUIREMENTS FOR MEASUREMENT, BRANCHING AND BALL SIZE SHALL CONFORM TO THE "AMERICAN STANDARD FOR NURSERY STOCK" (LATEST EDITION) BY THE AMERICAN NURSERY AND LANDSCAPE ASSOCIATION. PLANT MATERIALS FOR GROUPINGS OR WHERE SYMMETRY IS CRITICAL, SHALL BE MATCHED AS NEARLY AS POSSIBLE.
 - CONTRACTOR SHALL OBTAIN ONE (1) COMPLETE SOIL EVALUATION PERFORMED BY A CERTIFIED SOIL TESTING LABORATORY, INCLUDING RECOMMENDATIONS FOR SPECIFIC SOIL AMENDMENTS. SAMPLES ARE TO BE TAKEN PRIOR TO INSTALLATION OF PLANT MATERIALS AND ANY ADDITION OF SOIL AMENDMENTS.
 - UNLESS NOTED OTHERWISE, CONTRACTOR SHALL RESTORE ALL AREAS IMPACTED BY CONSTRUCTION ACTIVITIES ON AND OFF-SITE WITH SEED. REFER TO TECHNICAL SPECIFICATIONS FOR ADDITIONAL INFORMATION REGARDING REQUIREMENTS.
 - CONTRACTOR TO CONFIRM PRESERVATION AND REMOVAL OF ALL TREES AND PLANT MATERIALS WITH OWNER PRIOR TO CONSTRUCTION ACTIVITIES.
 - REFER TO CIVIL DRAWINGS FOR RETAINING WALL AND NATIVE PLANTING INFORMATION.
 - AN AUTOMATIC IRRIGATION SYSTEM WILL BE PROVIDED FOR ALL LANDSCAPE PLANT MATERIAL AREAS.
 - COMPACTED STONE TO BE "ALABAMA SUNSET GRAVEL" DECORATIVE STONE AS DISTRIBUTED BY EARTHWORKS - PERRYVILLE, MO (WWW.EARTHWORKSSTONE.COM) OR APPROVED EQUAL.
- LANDSCAPE CALCULATIONS**
- SITE COVERAGE: TOTAL SITE = 95,058 S.F.
BUILDING AND PAVEMENTS = 26,415 S.F. (28%)
TOTAL GREEN SPACE = 68,643 S.F. (72%)
 - 4 CANOPY TREES REQUIRED PER 10 PARKING SPACES
14 PARKING SPACES: 6 CANOPY TREES REQUIRED
6 CANOPY TREES PROVIDED (MARKED WITH AN "X")
 - 5 SHRUBS REQUIRED PER 20 L.F. OF PERIMETER BUILDING FACE
415 L.F. OF PERIMETER BUILDING FACE = 125 SHRUBS REQUIRED
70 SHRUBS + 28 ORNAMENTAL GRASSES AND 63 PERENNIALS PROVIDED

E16 GENERAL NOTES & CALCULATIONS
N.T.S.

PRAIRIE SEED MIXTURE

SCIENTIFIC NAME	COMMON NAME	WEIGHT PER ACRE	MATURE HEIGHT
SEDGES			
ANDROPOGON GERARDII	BIG BLUESTEM	32 OZ.	4'-8'
ELYMUS CANADENSIS	CANADA WILD RYE	32 OZ.	2-5'
PANICUM VIRGATUM	SWITCH GRASS	16 OZ.	3-5'
SORGHASTRUM NUTANS	INDIAN GRASS	16 OZ.	4-7'
SCHIZACHYRIUM SCOPARIUM	LITTLE BLUESTEM	64 OZ.	2-4'
SPOROBOLUS HETEROLEPIS	PRAIRIE DROPSEED	16 OZ.	2-3'
FORBES			
ASCLEPIAS SYRICA	COMMON MILKWEED	32 OZ.	2-4'
ASTER OBLONGIFOLIUS	AROMATIC ASTER	12 OZ.	1-3'
COREOPSIS LANCEOLATA	LANCE-LEAVED COREOPSIS	20 OZ.	1-2'
ECHINACEA PALLIDA	PALE PURPLE CONEFLOWER	48 OZ.	2-4'
ERYNGIUM YUCCIFOLIUM	RATTLESNAKE MASTER	16 OZ.	3-5'
HELIOPSIS HELIANTHOIDES	FALSE SUNFLOWER	16 OZ.	4-6'
LESPEDEZA CAPITATA	ROUND-HEAD BUSHCLOVER	16 OZ.	2-4'
LIATRIS PYCNOSTACHYA	PRAIRIE BLAZING STAR	16 OZ.	2-4'
MONARDA FISTULOSA	WILD BERGAMOT	4 OZ.	3-5'
RATIBIDA PINNATA	GRAY-HEADED CONEFLOWER	8 OZ.	3-6'
RUDBECKIA HIRTA	BLACK-EYED SUSAN	4 OZ.	2-3'

A16 NATIVE PLANT SCHEDULE
N.T.S.

ISSUANCE: _____
DESCRIPTION: _____
DATE: _____
BY: _____

FGM ARCHITECTS
ONE METROPOLITAN SQUARE, SUITE 1145
ST. LOUIS, MO 63102
314.439.1401 (C) 2019 FGM ARCHITECTS
MISSOURI CERTIFICATE OF AUTHORITY #000311

ARCHITECT
FGM ARCHITECTS
ONE METROPOLITAN SQUARE, SUITE 1145
ST. LOUIS, MO 63102
314.439.1401 (C) 2019 FGM ARCHITECTS
MISSOURI CERTIFICATE OF AUTHORITY #000311

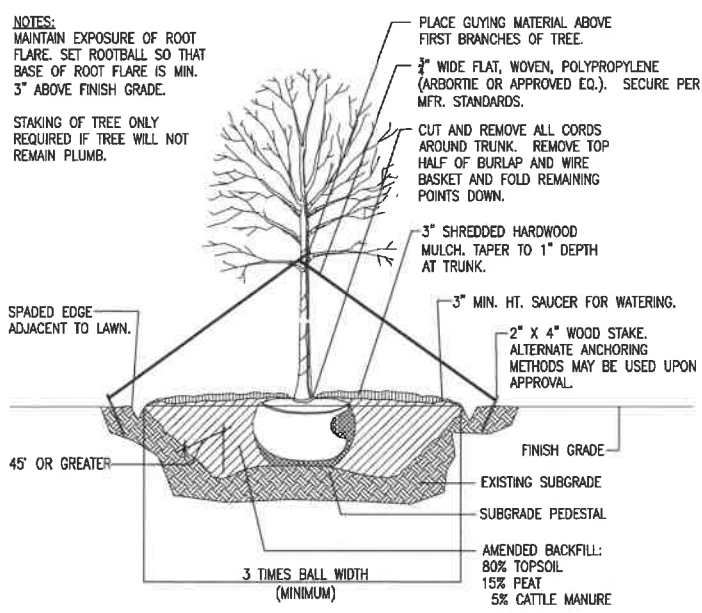
STRUCTURAL M.E.P. PP
SSC ENGINEERING, INC.
1807 FORDON AVENUE
CHESTERFIELD, MO 63005
(636) 507-7700 (C) 2019 FGM ARCHITECTS
MISSOURI CERTIFICATE OF AUTHORITY #0000000000

CIVIL
BAX ENGINEERING
221 FORD WHITE BLVD.
ST. CHARLES, MO 63301
(636) 298-2522 (C) 2019 FGM ARCHITECTS
MISSOURI CERTIFICATE OF AUTHORITY #0000000000

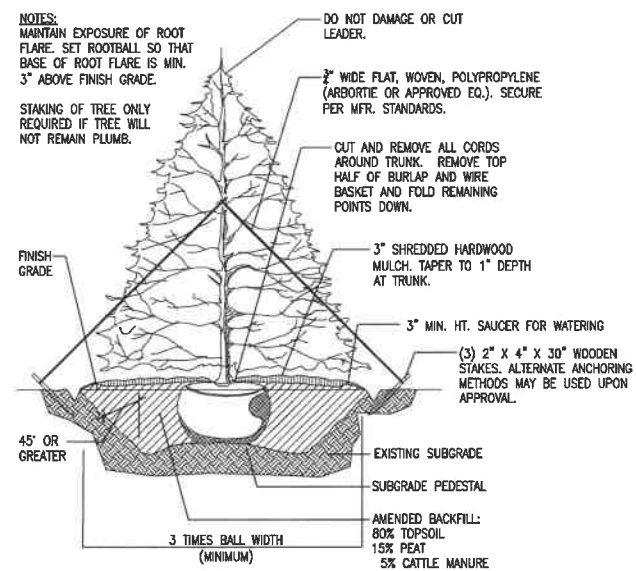
JOSHUA MANDEL ARCHITECT
STATE OF MISSOURI
JOSHUA MANDEL ARCHITECT
NUMBER A-201303074
The professional seal and signature of the architect is required on this plan. All drawings, specifications and other documents shall be filed with this seal and not be considered prepared by this architect, and the architect assumes no liability for any errors or omissions on any drawings, specifications or documents not exhibiting this seal.
DATE 12/31/19

ARNOLD STATION-HOUSE #1
ROCK TOWNSHIP AMBULANCE DISTRICT
2455 HICKORY SQUARE PKWY
ARNOLD, MO 63010
LANDSCAPE PLAN

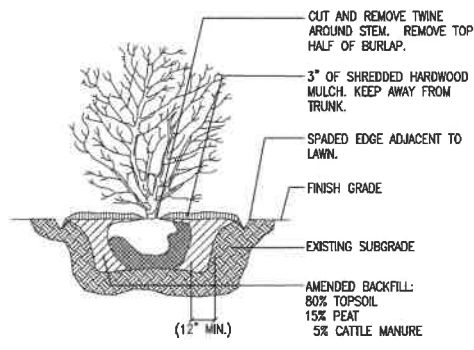
SHEET NO.
L1.1.0
JOB NO. 19-2726.01
© 2019 FGM ARCHITECTS INC.



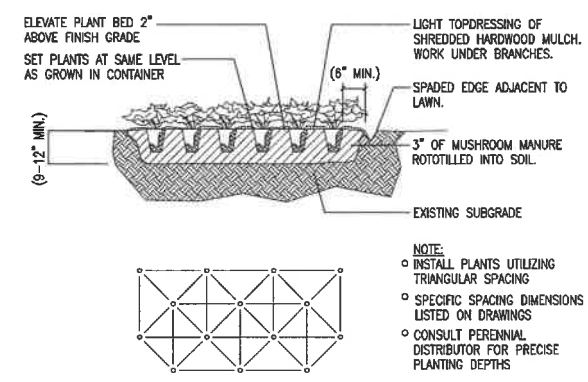
DECIDUOUS TREE INSTALLATION DETAIL
N.T.S.



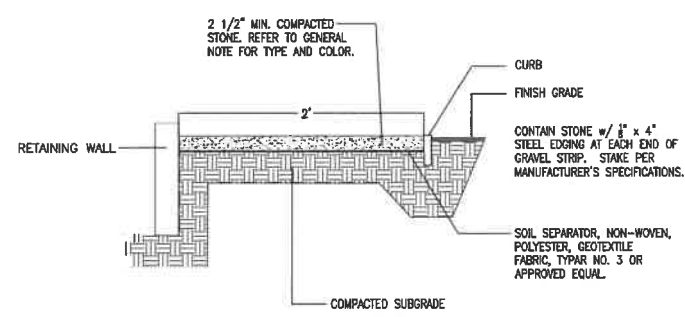
EVERGREEN TREE INSTALLATION DETAIL
N.T.S.



SHRUB INSTALLATION DETAIL
N.T.S.

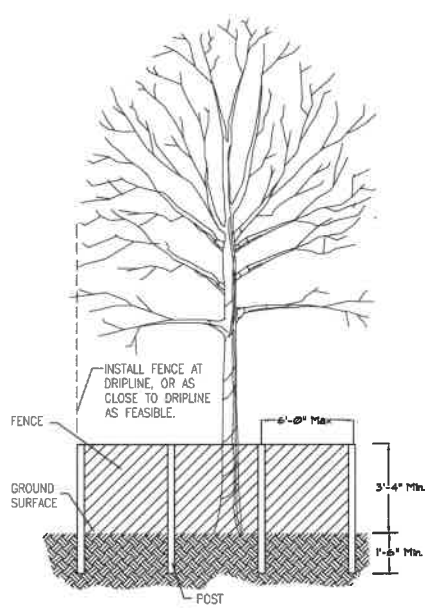


PERENNIAL & ORNAMENTAL GRASS INSTALLATION DETAIL
N.T.S.



STONE STRIP DETAIL
N.T.S.

H13 STONE MAINTENANCE STRIP DETAIL
N.T.S.



- TREE PRESERVATION NOTES**
- FENCE POSTS SHALL BE EITHER STANDARD STEEL POSTS OR WOOD POSTS. FENCE SHALL BE 40" HIGH SNOW FENCE, PLASTIC WEB FENCING OR ANY OTHER APPROVED MATERIAL. REFER TO TECHNICAL SPECIFICATION SECTION 015639 (TEMPORARY TREE AND PLANT PROTECTION) FOR ADDITIONAL INFORMATION. REMOVE PROTECTIVE FENCE ONLY AFTER ALL CONSTRUCTION WORK HAS BEEN FINISHED.
 - EXISTING TREES TO BE PRESERVED SHALL BE BARRICADED IN A MANNER THAT WILL EFFECTIVELY PROTECT THEM DURING CONSTRUCTION OPERATIONS. PRIOR TO ANY ONSITE CONSTRUCTION, PROTECT EXISTING TREES DESIGNATED TO REMAIN AGAINST UNNECESSARY CUTTING, BREAKING, SKINNING OF ROOTS, SKINNING OR BRUISING OF BARK, SMOTHERING OF TREES BY STOCKPILING CONSTRUCTION MATERIALS OR EXCAVATED MATERIALS WITHIN THE DRIP LINE, EXCESS FOOT OR VEHICULAR TRAFFIC, OR PARKING OF VEHICLES WITHIN THE DRIP LINE. PROVIDE TEMPORARY GUARDS TO PROTECT TREES TO BE LEFT STANDING. PROTECTIVE FENCING SHALL BE INSTALLED. CONFIRM REMOVALS OF ANY VEGETATION WITH OWNER PRIOR TO CONSTRUCTION ACTIVITIES.
 - LOCATIONS OF EXISTING TREES ARE APPROXIMATE. CONTRACTOR TO CONFIRM ACTUAL LOCATIONS PRIOR TO CONSTRUCTION ACTIVITIES.

A13 TREE PRESERVATION DETAIL
N.T.S.

ISSUANCE NO	DATE	DESCRIPTION

FGM ARCHITECTS
ONE METROPOLITAN SQUARE, SUITE 1945
ST. LOUIS, MO 63102
314.439.1401 (C) 314.439.1402 (F)
MISSOURI CERTIFICATE OF AUTHORITY #000011

ARCHITECT
FGM ARCHITECTS
ONE METROPOLITAN SQUARE, SUITE 1945
ST. LOUIS, MO 63102
314.439.1401 (C) 314.439.1402 (F)
MISSOURI CERTIFICATE OF AUTHORITY NO. 000011

STRUCTURAL, M.E.P., FP
SSC ENGINEERING, INC.
1807 PERSON AVE.
CHESTERFIELD, MO 63005
636.306.2776 (C) 636.386.9776
MISSOURI CERTIFICATE OF AUTHORITY NO. 00000000

CIVIL
BAX ENGINEERING
221 FRONT WEST BLVD.
ST. CHARLES, MO 63301
636.955.0144 (C) 636.952.1718 (F)
MISSOURI CERTIFICATE OF AUTHORITY NO. 00000000



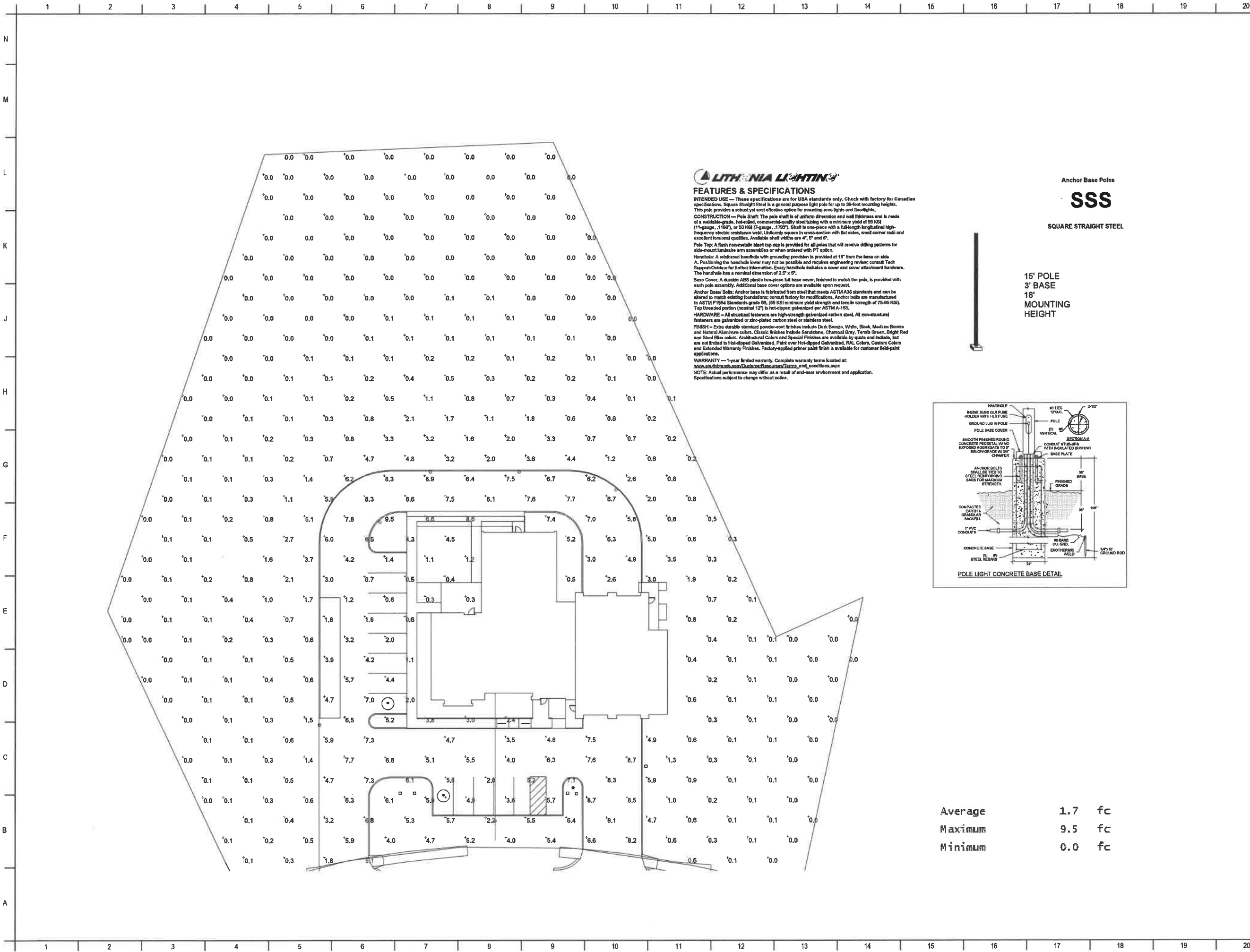
JOSHUA MANDELL - ARCHITECT
ST #A-2013036074
The professional seal shall not be used to certify any work not shown on this sheet. All drawings, calculations, or other documents not submitted with this seal shall not be considered approved by this seal. The seal shall not be used to certify any work not shown on this sheet. All drawings, calculations, or other documents not submitted with this seal shall not be considered approved by this seal. DATE 12/31/19

ARNOLD STATION-HOUSE #1
ROCK TOWNSHIP AMBULANCE DISTRICT
2455 HICKORY SQUARE PKWY
ARNOLD, MO 63010
LANDSCAPE DETAILS

SHEET NO.
L2.1.0

JOB NO. 19-2724.01
© 2019 FGM Architects Inc.

A1 LANDSCAPE INSTALLATION DETAILS
N.T.S.

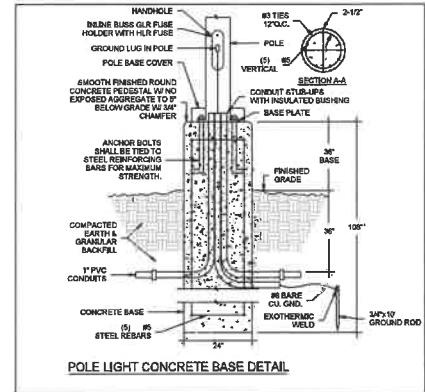


FEATURES & SPECIFICATIONS
INTENDED USE — These specifications are for USA standards only. Check with factory for Canadian specifications. Square Straight Steel is a general purpose light pole for up to 30-foot mounting heights. This pole provides a robust yet cost effective option for mounting area lights and floodlights.
CONSTRUCTION — Pole Shaft: The pole shaft is of uniform dimension and wall thickness and is made of a weldable-grade, hot-rolled, commercial-quality steel tubing with a minimum yield of 55 KSI (11-gauge, -1190"), or 50 KSI (7-gauge, -1703"). Shaft is one-piece with a full-length longitudinal high-frequency electric resistance weld. Uniformly square in cross-section with flat sides, small corner radii and excellent torsional qualities. Available shaft widths are 4", 5" and 6".
Pole Top: A flush non-metallic black top cap is provided for all poles that will receive drilling patterns for side-mount luminaire arm assemblies or when ordered with PT option.
Handhole: A reinforced handhole with grounding provision is provided at 10' from the base on side A. Fastening the handhole lower may not be possible and requires engineering review; consult Tech Support-Outside for further information. Every handhole includes a cover and cover attachment hardware. The handhole has a nominal dimension of 2.5" x 5".
Base Cover: A durable ABS plastic two-piece full base cover, finished to match the pole, is provided with each pole assembly. Additional base cover options are available upon request.
Anchor Base/ Bolt: Anchor base is fabricated from steel that meets ASTM A305 standards and can be altered to match existing foundations; consult factory for modifications. Anchor bolts are manufactured to ASTM F1554 Standards grade 36, (55 KSI minimum yield strength and tensile strength of 75-95 KSI). Top threaded portion (minimum 12") is hot-dipped galvanized per ASTM A-153.
HARDWARE — All structural fasteners are high-strength galvanized carbon steel. All non-structural fasteners are galvanized or zinc-plated carbon steel or stainless steel.
FINISH — Extra durable standard powder-coat finishes include Dark Bronze, White, Black, Medium Bronze and Natural Aluminum colors. Custom finishes include Sandstone, Charcoal Gray, Terra Green, Bright Red and Steel Blue colors. Architectural Colors and Special Finishes are available by quote and include, but are not limited to Hot-dipped Galvanized, Paint over Hot-dipped Galvanized, RAL Colors, Custom Colors and Extended Warranty Finishes. Factory-applied primer paint finish is available for customer field-paint applications.
WARRANTY — 1-year limited warranty. Complete warranty terms located at: www.lithonia-lighting.com
NOTE: Actual performance may differ as a result of end-user environment and application. Specifications subject to change without notice.

Anchor Base Poles
SSS
 SQUARE STRAIGHT STEEL



15' POLE
 3' BASE
 18' MOUNTING HEIGHT



Average	1.7	fc
Maximum	9.5	fc
Minimum	0.0	fc

ISSUANCE NO.	DATE	DESCRIPTION

FGM ARCHITECTS
 ONE METROPOLITAN SQUARE, SUITE 1945
 ST. LOUIS, MO 63102
 314.497.1401 (O) 314.497.4026 (F)
 MISSOURI REGISTERED PROFESSIONAL ARCHITECT NO. 008311

ARCHITECT
FGM ARCHITECTS
 1520 SOUTH BROADWAY, SUITE 1150
 ST. LOUIS, MO 63102
 314.497.1401 (O) 314.478.6620 (F)
 MISSOURI REGISTERED PROFESSIONAL ARCHITECT NO. 000011

STRUCTURAL, M.E.P. FP
SSC ENGINEERING, INC.
 18501 EDISON AVENUE
 CHESTERFIELD, MO 63005
 636.582.3922 (O) 636.532.7079 (F)
 MISSOURI REGISTERED PROFESSIONAL ENGINEER NO. 001244

CIVIL
BAX ENGINEERING
 221 POINT WEST BLVD.
 ST. CHARLES, MO 63301
 636.750.3022 (O) 636.750.1718 (F)
 MISSOURI REGISTERED PROFESSIONAL ENGINEER NO. 000653

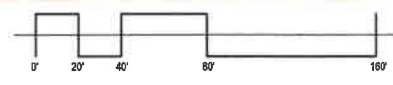
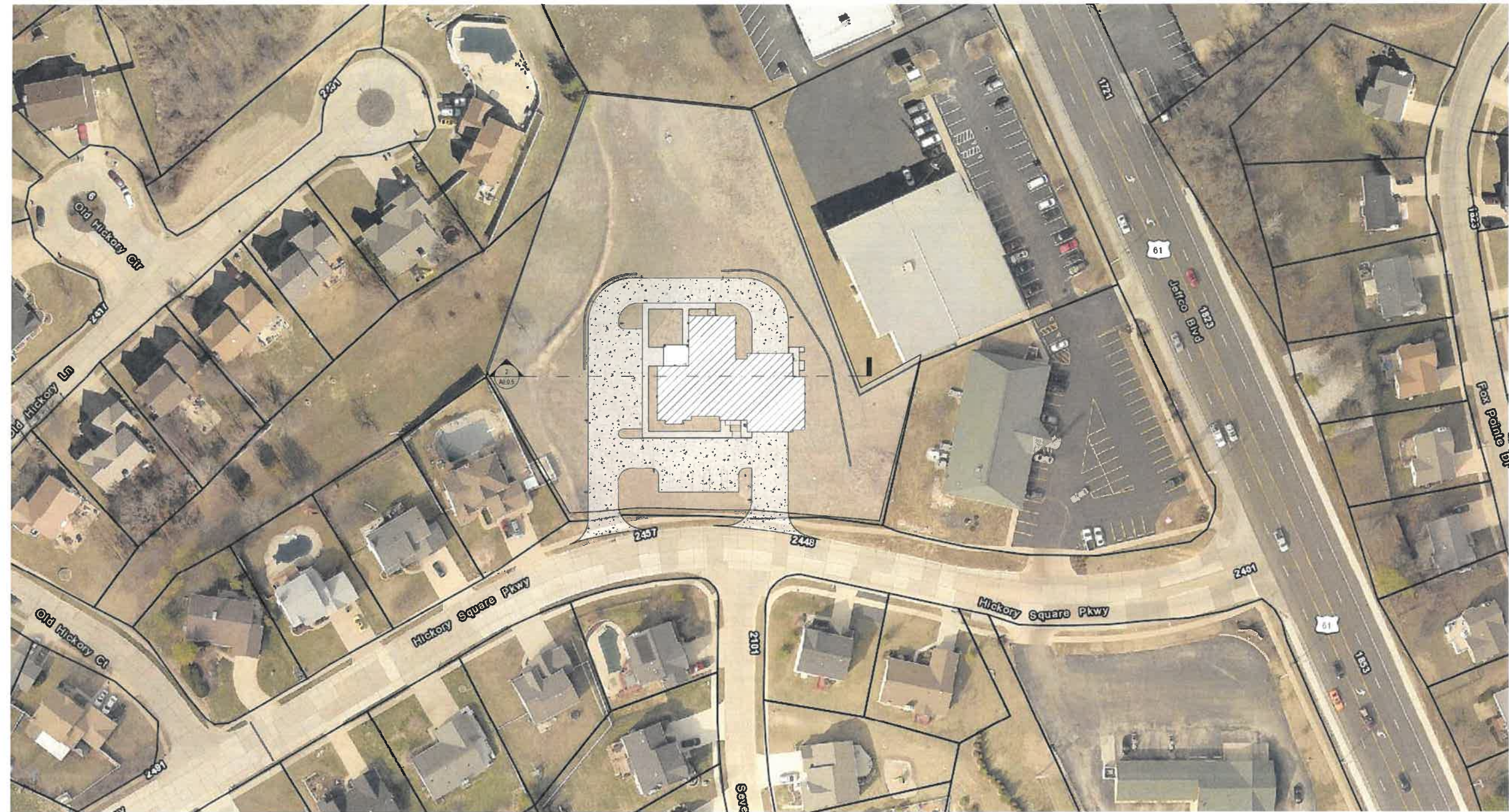
DISCIPLINE ORGANIZATION NAME
BRIAN SCOTT
 11/21/2019

BRIAN SCOTT - PE
 #2013019111 EXP. 12/31/2019
 The Seal and Signature apply only to the Document to which they are attached, and Expressly Disclaim any Responsibility for all other Plans, Specifications, Estimates, Reports, or other Documents or Information relating to or intended to be used for any part or parts of the Professional Engineering Project.
 Copyright © 2019 by SSC Engineering, Inc.
 DATE 11/21/2019

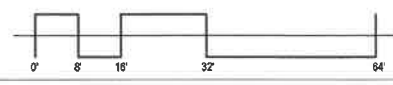
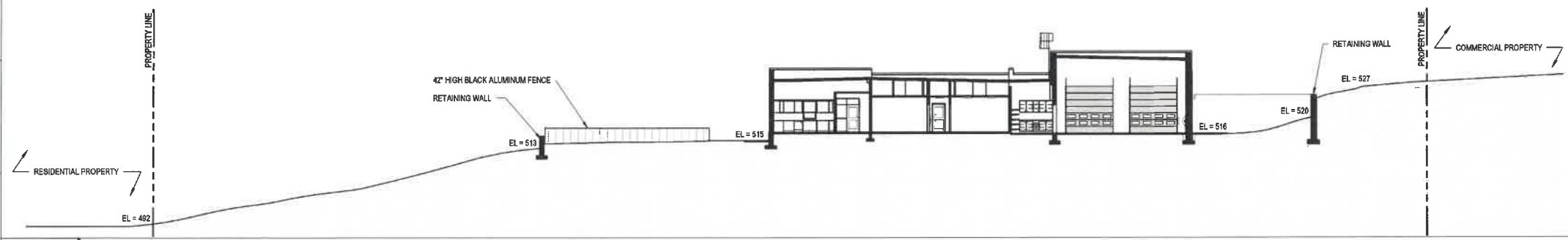
ARNOLD STATION - HOUSE #1
 ROCK TOWNSHIP AMBULANCE DISTRICT
 2455 HICKORY SQUARE PKWY ARNOLD, MO
 63010
ELECTRICAL SITE PHOTOMETRICS PLAN

SHEET NO.
L.3
 JOB NO. 19-2727.01
 © 2019 FGM Architects Inc.

2019286 - NOT FOR CONSTRUCTION



1 OVERALL AREA PLAN
1" = 40'-0"



2 EAST/WEST BUILDING AND SITE CROSS SECTION (LOOKING FROM HICKORY SQUARE PARKWAY)
1/16" = 1'-0"

11/21/2019 3:08:57 PM
 C:\Revit\Temp\2018\19-2726.01_R\AD_Arnold_Central_2018_juliana.schachter.rvt
 Copyright 2019 FGM Architects, Inc.

NO.	DATE	REVISION

FGM ARCHITECTS
 ONE METROPOLITAN SQUARE, SUITE 1945
 ST. LOUIS, MO 63102
 314.499.1401 (O) 314.499.1402 (F)
 MISSOURI STATE CERTIFICATE OF AUTHORITY #000011

ARCHITECT
 FGM ARCHITECTS
 ONE METROPOLITAN SQUARE, SUITE 1945
 ST. LOUIS, MO 63102
 314.499.1401 (O) 314.499.1402 (F)
 MISSOURI STATE CERTIFICATE OF AUTHORITY #000011

STRUCTURAL, M.E.P., P.P.
 SSC ENGINEERING, INC.
 1800 BIRCH AVENUE
 CHESTERFIELD, MO 63005
 636.850.7770 (O) 636.850.7377 (F)
 MISSOURI STATE CERTIFICATE OF AUTHORITY #0000000000

CIVIL
 BAX ENGINEERING
 231 POINT WEST BLVD.
 ST. CHARLES, MO 63305
 636.682.6572 (O) 636.682.1718 (F)
 MISSOURI STATE CERTIFICATE OF AUTHORITY #0000000000

DISCIPLINE
 ORGANIZATION NAME
 ADDRESS
 CITY, STATE, ZIP
 XXXXXXXXXXXX (O) XXXXXXXXXXXX (F)
 MISSOURI STATE CERTIFICATE OF AUTHORITY #0000000000



JOSHUA MANDELL - ARCHITECT
 ST #A-201303074
 The professional architect seal affixed to this sheet applies only to the specific and terms shown on this sheet. All drawings, instruments or other documents not exhibiting this seal shall not be considered prepared by this architect, and the architect expressly disclaims any and all responsibility for such plans, drawings or documents not exhibiting this seal.
 DATE 12/31/19

ARNOLD STATION-HOUSE #1
 ROCK TOWNSHIP AMBULANCE DISTRICT
 2455 HICKORY SQUARE PKWY
 ARNOLD, MO 63010
OVERALL AERIAL PLAN & SITE CROSS SECTION

SHEET NO.
A0.0.5

JOB NO. 19-2726.01
 © 2019 FGM Architects Inc.

11/21/2019 2:47:13 PM
 C:\Revit\Temp\2018\19-2726.01_RT_AD_Arnold_Central_2018_juliana.schafer.rvt
 Copyright 2019 FGM Architects, Inc.



EXTERIOR ELEVATION NOTES

TAG	NOTE
E1	6" STL PIPE BOLLARD, PAINTED - SEE DETAIL XXX
E2	STOREFRONT DOOR AND FRAME ASSEMBLY - REFER TO DOOR SCHEDULE AND TYPES
E3	DOWNSPOUT LOCATION - TYPICAL PROVIDE U.S. STRAPS AT 8'-0" O.C. MAX AND THREE (3) MIN - EQUALLY SPACED PER D.S.
E4	DECORATIVE LIGHTING - SEE 'E' SERIES
E5	WALL PACK LIGHTING - SEE 'E' SERIES
E6	PRE-ENGINEERED METAL CANOPY
E7	CAGE LADDER
E8	MECHANICAL SCREEN WALL

ISSUANCE

NO.	DATE	DESCRIPTION

FGM ARCHITECTS
 ONE METROPOLITAN SQUARE, SUITE 1945
 ST. LOUIS, MO 63102
 314.437.1401 (O) 314.437.1402 (F)
 MISSOURI CERTIFICATE OF AUTHORITY #000311

ARCHITECT
 FGM ARCHITECTS
 ONE METROPOLITAN SQUARE, SUITE 1945
 ST. LOUIS, MO 63102
 314.437.1401 (O) 314.437.1402 (F)
 MISSOURI CERTIFICATE OF AUTHORITY #000311

STRUCTURAL, M.E.P., FP
 SSC ENGINEERING, INC.
 1828 EDISON AVENUE
 CHESTERFIELD, MO 63005
 636.200.7770 (O) 636.200.7771 (F)
 MISSOURI CERTIFICATE OF AUTHORITY #0000000000

CIVIL
 BAX ENGINEERING
 221 FORD WEST BLVD.
 ST. CHARLES, MO 63301
 636.228.8855 (O) 636.228.1718 (F)
 MISSOURI CERTIFICATE OF AUTHORITY #0000000000



JOSHUA MANDELL - ARCHITECT
 ST #A-2013036074
 The professional architect seal affixed to this sheet applies only to the indicated and herein shown on this sheet. All drawings, instruments or other documents not exhibiting this seal and not be considered prepared by this architect, and the architect expressly disclaims any and all responsibility for such plan, drawings or documents not exhibiting this seal. DATE 12/31/19

ARNOLD STATION-HOUSE #1
 ROCK TOWNSHIP AMBULANCE DISTRICT
 2455 HICKORY SQUARE PKWY
 ARNOLD, MO 63010
ARNOLD P&Z EXT. ELEVATIONS

SHEET NO.
A0.0.6

JOB NO. 19-2726.01
 © 2019 FGM Architects Inc.

FEATURES & SPECIFICATIONS

INTENDED USE

Provides years of maintenance-free illumination for outdoor use in residential & commercial applications. Ideal for applications such as lighting walkways and stairways for safety and security.

CONSTRUCTION

Cast-aluminum housing with corrosion-resistant paint in either dark bronze or white finish.

ADA compliant.

OPTICS

4000K CCT LEDs.

Polycarbonate lens protects the LED from moisture, dirt and other contaminants.

LUMEN MAINTENANCE: The LED will deliver 70% of its initial lumens at 50,000 hour average LED life. See Lighting Facts label on page 2 for performance details.

ELECTRICAL

MVOLT driver operates on any line voltage from 120-277V

Operating temperature -30°C to 40°C.

1KV surge protection standard.

INSTALLATION

Surface mounts to universal junction box (provided by others).

LISTINGS

UL Listed to U.S. and Canadian safety standards for wet locations.

Tested in accordance with IESNA LM-79 and LM-80 standards.

WARRANTY — 5-year limited warranty. Complete warranty terms located at

www.acuitybrands.com/CustomerResources/Terms_and_conditions.aspx

Actual performance may differ as a result of end-user environment and application.

All values are design or typical values, measured under laboratory conditions at 25 °C.

Note: Specifications subject to change without notice.

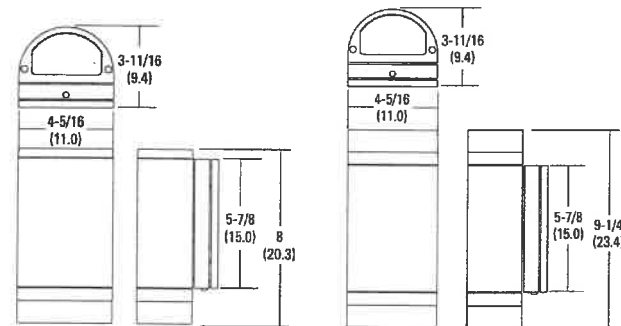
Catalog Number	
Notes	
Type	B

Outdoor General Purpose OLLWD & OLLWU LED WALL CYLINDER LIGHT



Specifications

All dimensions are inches (centimeters)



ORDERING INFORMATION

For shortest lead times, configure products using **bolded options**.

Example: OLLWD LED P1 40K MVOLT DDB

Series	Performance Package	Color temperature (CCT)	Voltage	Finish
OLLWD LED Downlight	P1	40K 4000K	MVOLT 120V-277V	DDB Dark bronze
OLLWU LED Up & downlight			120 120V ¹	WH White

Notes

¹ Only available with OLLWU and in DDB.



WSR LED Architectural Wall Sconce



Inverted available with WLU option only.

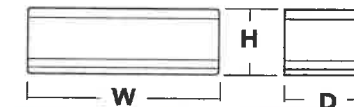
Catalog Number	
Notes	
Type	A

Introduction

Classic Architectural Wall Sconce with the LED technology. Long-life, maintenance-free product with typical energy savings of 80% compared to metal halide versions. The integral battery backup option provides emergency egress lighting, without the use of a back-box or remote gear, so installations maintain their aesthetic integrity. The WSR LED is ideal for replacing existing 50 – 250W metal halide wall-mounted products. The expected service life is 20+ years of nighttime use.

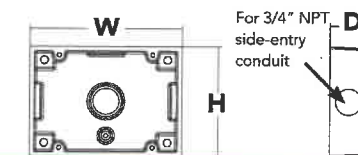
Specifications Luminaire

Height: 7-1/4" (18.4 cm)
Width: 18" (45.7 cm)
Depth: 9" (22.8 cm)
Weight: 17 lbs (7.7 kg)



Optional Back Box (BBW)

Height: 4" (10.2 cm)
Width: 5-1/2" (14.0 cm)
Depth: 1-1/2" (3.8 cm)



Ordering Information

EXAMPLE: WSR LED P2 40K SR3 MVOLT DDBTXD

WSR LED

Series	Performance Package	Color Temperature	Distribution	Voltage	Mounting	Options	Finish (required)
WSR LED	P1	30K	SR2 Type II	MVOLT ¹	Shipped included	Shipped installed PE Photoelectric cell, button type ² SF Single fuse (120, 277, 347V) ³ DF Double fuse (208, 240, 480V) ³ DMG 0-10v dimming wires pulled outside fixture (for use with an external control, ordered separately) E20WC Emergency battery backup, CEC compliant (18W, -20°C) ⁴ E10WH Emergency battery backup, CEC compliant (10W, 5°C) ⁴ WLU Wet location door for up orientation ⁵ PIR Motion/ambient light sensor ⁶ DS Dual switching ⁷ SPD Separate Surge Protection ⁸ Shipped separately VG Vandal guard WG Wire guard	DDBXD Dark bronze
	P2	40K	SR3 Type III	120	(blank) Surface mount		DBLXD Black
	P3	50K	SR4 Type IV	208	Shipped separately²		DNAXD Natural aluminum
	P4			240 277 347 480	BBW Surface-mounted back box		DWHXD White DSSXD Sandstone DDBTXD Textured dark bronze DBLTXD Textured black DNATXD Textured natural aluminum DWHGXD Textured white DSSTXD Textured sandstone

Emergency Battery Operation

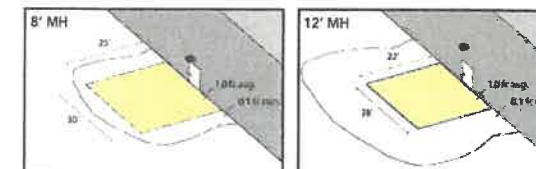
The emergency battery backup (E20WC & E10WH options) is integral to the luminaire - no external housing required! This design provides reliable emergency operation while maintaining the aesthetics of the product.

All E20WC and E10WH configurations include an independent secondary driver with an integral relay to immediately detect AC power loss.

The emergency battery will power the luminaire for a minimum duration of 90 minutes (maximum duration of three hours) from the time supply power is lost, per [International Building Code Section 1006](#) and [NFPA 101 Life Safety Code Section 7.9](#), provided luminaires are mounted at an appropriate height and illuminate an open space with no major obstructions.

The examples below show illuminance of 1 fc average and 0.1 fc minimum of the P1 power package Type IV product in emergency mode.

WSR P1 LED 40K SR4 MVOLT E20WC
10' x 10' Gridlines
8' and 12' Mounting Height



NOTES

- MVOLT driver operates on any line voltage from 120-277V (50/60 Hz).
- Not available with 480V option.
- Single fuse (SF) requires 120V, 277V or 347V options. Double fuse (DF) requires 208V, 240V or 480V options.
- Not available with 347V or 480V. Not available with WLU.
- WLU not available with PIR or ELCW.
- See PIR Table for default settings.
- Only available with P3 & P4 packages. Provides 50/50 luminaire operation via two independent drivers and light engines on two separate circuits. Not available with ELCW, WLU, SF, or DF. When ordered with photocell (PE) or motion sensor (PIR), only the primary power source leads will be controlled.
- See electrical section on page 2 for more details.



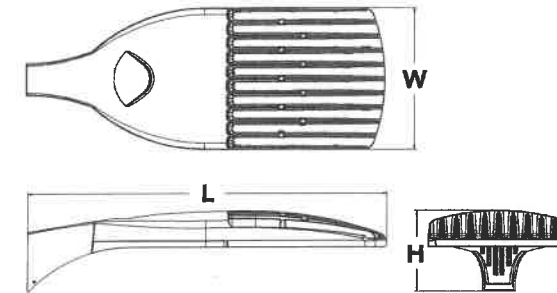
D-Series Size 1 LED Area Luminaire

d#series



Specifications

EPA:	1.01 ft ² (0.09 m ²)
Length:	33" (83.8 cm)
Width:	13" (33.0 cm)
Height:	7-1/2" (19.0 cm)
Weight (max):	27 lbs (12.2 kg)



A+ Capable options indicated by this color background.

Catalog Number	
Notes	
Type	S-1

Capable Luminaire

This item is an A+ capable luminaire, which has been designed and tested to provide consistent color appearance and system-level interoperability.

- All configurations of this luminaire meet the Acuity Brands' specification for chromatic consistency
- This luminaire is A+ Certified when ordered with DTL® controls marked by a shaded background. DTL DLL equipped luminaires meet the A+ specification for luminaire to photocontrol interoperability¹
- This luminaire is part of an A+ Certified solution for ROAM® or XPoint™ Wireless control networks, providing out-of-the-box control compatibility with simple commissioning, when ordered with drivers and control options marked by a shaded background¹

To learn more about A+, visit www.acuitybrands.com/aplus.

1. See ordering tree for details.
2. A+ Certified Solutions for ROAM require the order of one ROAM node per luminaire. Sold Separately: [Link to Roam](#); [Link to DTL DLL](#)

Ordering Information

EXAMPLE: DSX1 LED P7 40K T3M MVOLT SPA DDBXD

DSX1LED

Series	LEDs	Color temperature	Distribution	Voltage	Mounting
DSX1 LED	Forward optics	30K 3000 K	T1S Type I short	MVOLT ^{4,5} 120 ⁶ 208 ^{5,6} 240 ^{5,6} 277 ⁶ 347 ^{5,6,7} 480 ^{5,6,7}	Shipped included SPA Square pole mounting RPA Round pole mounting WBA Wall bracket SPUMBA Square pole universal mounting adaptor ⁸ RPUMBA Round pole universal mounting adaptor ⁸ Shipped separately KMA8 DDBXD U Mast arm mounting bracket adaptor (specify finish) ⁹
	P1 P4 P7	40K 4000 K	T2S Type II short		
	P2 P5 P8	50K 5000 K	T2M Type II medium		
	P3 P6 P9	AMBPC Amber phosphor converted ²	T3S Type III short		
	Rotated optics		T3M Type III medium		
	P10 ¹ P12 ¹		T4M Type IV medium		
	P11 ¹ P13 ¹		TFTM Forward throw medium		
			T4M Type IV medium		
			TFTM Forward throw medium		
			T5VS Type V very short		

Control options	Other options	Finish (required)
Shipped installed		
NLTAIR2 nLight AIR generation 2 enabled ¹⁹	PIRH1FC3V Bi-level, motion/ambient sensor, 15-30' mounting height, ambient sensor enabled at 1fc ^{5,15,16}	DDBXD Dark bronze
PER NEMA twist-lock receptacle only (controls ordered separate) ¹¹	BL30 Bi-level switched dimming, 30% ^{5,14,18}	DBLXD Black
PERS Five-wire receptacle only (controls ordered separate) ^{11,12}	BL50 Bi-level switched dimming, 50% ^{5,14,18}	DNAXD Natural aluminum
PER7 Seven-wire receptacle only (controls ordered separate) ^{11,12}	PNMTDD3 Part night, dim till dawn ^{5,19}	DWHXD White
DMG 0-10V dimming extend out back of housing for external control (leads exit fixture)	PNMT5D3 Part night, dim 5 hrs ^{5,19}	DDBTXD Textured dark bronze
DS Dual switching ^{13,14}	PNMT6D3 Part night, dim 6 hrs ^{5,19}	DBLTXD Textured black
PIR Bi-level, motion/ambient sensor, 8-15' mounting height, ambient sensor enabled at 5fc ^{5,15,16}	PNMT7D3 Part night, dim 7 hrs ^{5,19}	DNATXD Textured natural aluminum
PIRH Bi-level, motion/ambient sensor, 15-30' mounting height, ambient sensor enabled at 5fc ^{5,15,16}	FAO Field adjustable output ²⁰	DWHGXD Textured white
PIRHN Network, Bi-Level motion/ambient sensor ¹⁷		
PIR1FC3V Bi-level, motion/ambient sensor, 8-15' mounting height, ambient sensor enabled at 1fc ^{5,15,16}		
	Shipped installed	
	HS House-side shield ²¹	
	SF Single fuse (120, 277, 347V) ⁵	
	DF Double fuse (208, 240, 480V) ⁶	
	L90 Left rotated optics ¹	
	R90 Right rotated optics ¹	
	Shipped separately	
	BS Bird spikes ²²	
	EGS External glare shield ²²	

