



WALK-UP ATM
OWNER PROJECT # 38200P321236
3880 STATE ROUTE 141
ARNOLD, MISSOURI, 63010

WALK-UP AUTOMATIC TELLER MACHINE WITH CHASE SIGNATURE CANOPY DESIGN AND ASSOCIATED PAVEMENT STRIPING

PROJECT DESCRIPTION S13



ATM RENDERING A13

REFERENCE CODES

2015 INTERNATIONAL BUILDING CODE
2014 NATIONAL ELECTRIC CODE
2015 INTERNATIONAL PLUMBING CODE
2015 INTERNATIONAL MECHANICAL CODE

OCCUPANCY CLASSIFICATION (CHAPTER 3)

GROUP B - BUSINESS
TYPE OF CONSTRUCTION (CHAPTER 4)
TYPE II-B NON-COMBUSTIBLE, UNPROTECTED
FIRE PROTECTION SYSTEMS (CHAPTER 9)
DOES NOT HAVE A SPRINKLER SYSTEM

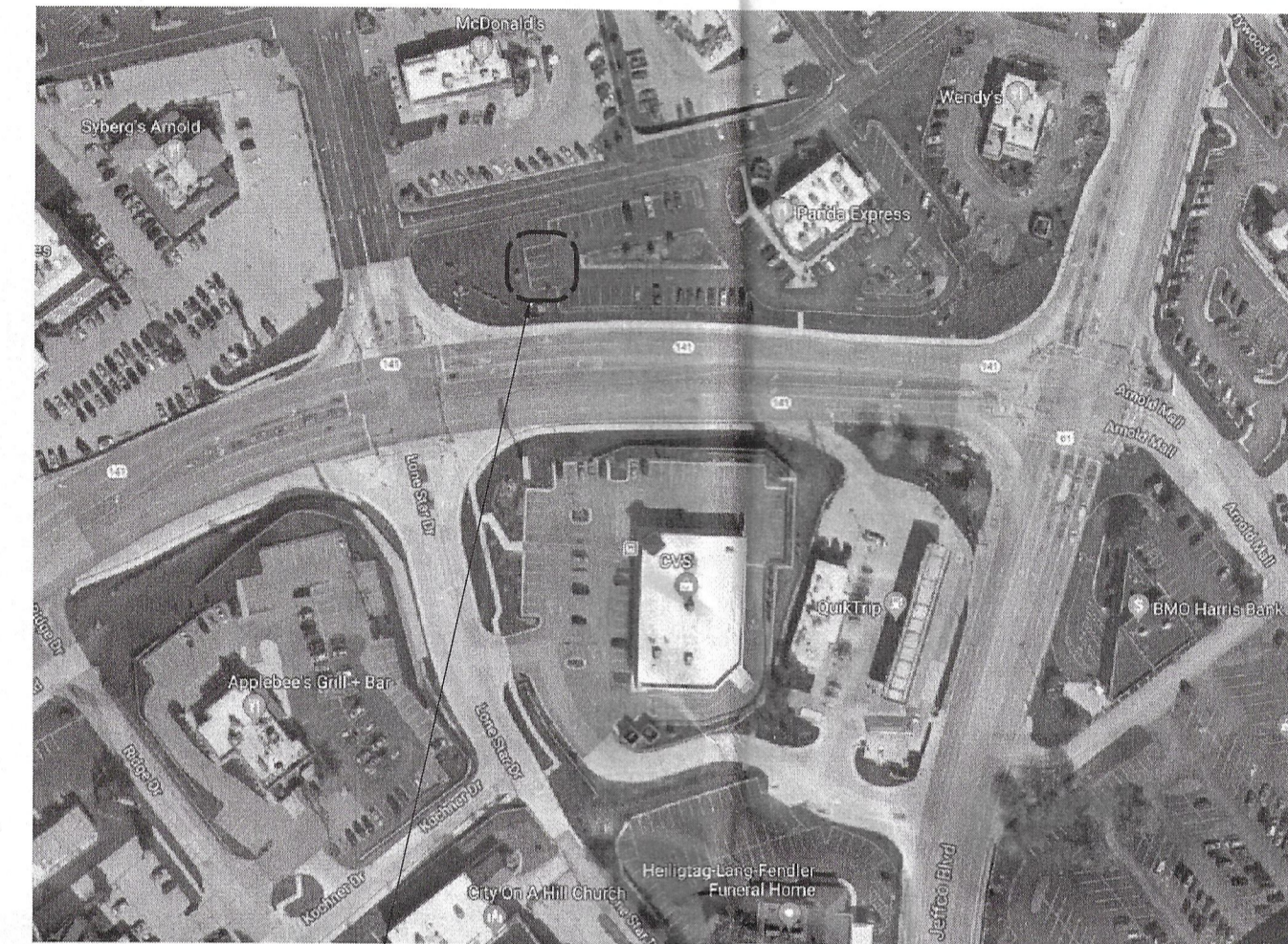
ACCESSIBILITY (CHAPTER 11)

THESE PLANS COMPLY WITH ALL OF THE PROVISIONS SET FORTH BY CHAPTER 11 OF THE 2015 IBC AND W/ "THE AMERICANS WITH DISABILITIES ACT"

ESTIMATED TRAFFIC COUNT

THE REMOTE WALK-UP ATM IS ESTIMATED TO GENERATE 50 TRANSACTIONS PER DAY WITH AN AVERAGE TRANSACTION TIME OF 3-5 MINUTES.

CODE AND PROJECT INFORMATION U01



VICINITY MAP M01

NOTES:

- A. GC TO VERIFY EXISTING CONDITIONS AND DIMENSIONS. NOTIFY PROJECT MANAGER OF ANY DISCREPANCIES.
- B. GC RESPONSIBLE FOR COORDINATING THE SCHEDULE, DELIVERY, AND INSTALLATION OF ALL VENDOR PROVIDED ITEMS. GC IS ADDITIONALLY RESPONSIBLE FOR COORDINATING ALL REVIEW OF PLANS WITH ANY AND ALL VENDORS.
- C. GC TO ENSURE ALL WASTES (HAZARDOUS AND NON-HAZARDOUS ARE DISPOSED OF AND/OR RECYCLED IN ACCORDANCE WITH ALL APPLICABLE CODES, INCLUDING LOCAL, STATE, AND NATIONAL LAWS AND REGULATIONS.

GENERAL NOTES G06

DRAWING ISSUANCE G01

DEVELOPER/GENERAL CONTRACTOR

PABLO CHAVEZ
GOLDEN SANDS GENERAL CONTRACTORS, INC.
12200 N. STEMMONS FREEWAY #305
DALLAS, TX 75234
972.232.7500 x3356
pablo.chavez@goldensandsgc.com

ARCHITECT

SKIP HYMER
REES MASILIONIS TURLEY ARCHITECTURE
2000 SHAWNEE MISSION PARKWAY, SUITE 100
MISSION WOODS, KS 66205
816.502.1515
816.842.1878 f
skip@rmta.biz

A00 COVER SHEET
A10 SITE PLAN
A11 ENLARGED PLANS AND ELEVATIONS
A21 DETAILS

SURVEY

RECEIVED JUN 25 2019

CONTACT INFORMATION A06

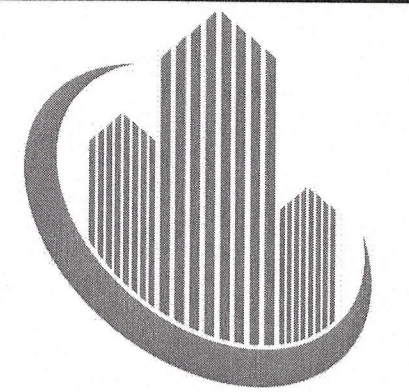
SHEET INDEX A01

A	ARCHITECTURAL	FA	FIRE ALARM	N	NORTH
AB	ANCHOR BOLT	FDN	FLOOR DRAIN	NEO	NEOPRENE
AC	ACOUSTICAL CEILING	FE	FOUNDATION	NIC	NOT IN CONTRACT
AF	ABOVE FINISH FLOOR	FE	FIRE EXTINGUISHER	NO	NUMBER
ACOUS	ACOUSTICAL	FEC	FIRE EXTINGUISHER CABINET	NOM	NOMINAL
ADJ	ADJACENT	FIN	FINISH	NTS	NOT TO SCALE
ALUM	ALUMINUM	FIXT	FIXTURE	OC	ON CENTER
ALT	ALTERNATE	FLR	FLOOR	OD	OUTSIDE DIAMETER
AP	ACCESS PANEL	FLASH	FLASHING	OFF	OFFICE
APPROX	APPROXIMATE	FLUOR	FLUORESCENT	OPNG	OPENING
ARCH	ARCHITECTURAL	FCC	FACE OF CONCRETE	OPP	OPPOSITE
BD	BOARD	FOF	FACE OF FINISH	P	PAINT
BLDG	BUILDING	FOF	FACE OF FINISH	PL	PLATE
BLK	BLOCK	FOS	FACE OF STUDS	PL	PLASTIC LAMINATE
BLKG	BLOCKING	FOW	FACE OF WALL	PLYWD	PLYWOOD
BM	BEAM	FR	FIRE	PNL	PANEL
BO	BOTTOM OF	FRP	RATED/RETARDANT FIBERGLASS	PR	PAIR
BOT	BOTTOM	FRP	FIRE RETARDANT	PROJ	PROJECT
CAB	CABINET	FRTW	POLYESTER PANEL	PROP	PROPERTY
CEM	CEMENT	FT	TREATED WOOD	PWR	POWER
CER	CERAMIC	FURR	FOOT, FEET	QTY	QUANTITY
CG	CORNER GUARD	FV	FURRING FURR	R	RISER
CJ	CONTROL JOINT	FV	FIELD VERIFY	RAD	RADIUS
CL	CLOSET	G	GRAPHIC	RD	ROOF DRAIN
CLKG	CAULKING	GA	GAUGE	RE	REFER TO
CLNG	CEILING	GALV	GALVANIZED	REFL	REFLECTED
CLR	CLEAR	GB	GRAB BAR	REINF	REINFORCED
CMU	CONCRETE MASONRY UNIT	GC	GENERAL CONTRACTOR	REQ	REQUIRED
COL	COLUMN	GL	GLASS	RF	RESILIENT FLOORING
CONC	CONCRETE	GRND	GROUND	RM	ROOM
CONC	CONDITION	GWB	GYP/PLUM	RO	ROUGH OPENING
CONSTR	CONSTRUCTION	GYPSUM	GYP/PLUM	S	SOUTH
CONT	CONTINUOUS	WALLBOARD	GYPSUM	SC	SOLID CORE
CONTR	CONTRACTOR	GYP	GYPSUM	SCHED	SCHEDULE
CORR	CORRIDOR	HB	HOSE BIBB	SD	SOAP DISPENSER
CT	CARPET TILE	HC	HANDICAPPED	SECT	SECTION
CTR	CENTER	HD	HEAD	SF	SQUARE FEET
CL	CENTER LINE	HDWD	HARDWOOD	SH	SHELF
DCD	DESIGN CONTROL DRAWINGS	HDWR	HARDWARE	SHT	SHEET
DET, DTL	DETAIL	HM	HOLLOW METAL	SIM	SIMILAR
DIA	DIAMETER	HORIZ	HORIZONTAL	SPEC	SPECIFICATION
DIFF	DIFFUSER	HR	HOUR	SQ	SQUARE
DIM	DIMENSION	HT	HEIGHT	SS	STAINLESS STEEL
DISP	DISPENSER	HVAC	HEATING, VENTILATING, AIR CONDITIONING	STD	STANDARD
DN	DOWN	ID	INSIDE DIAMETER	STL	STEEL
DO	DOOR OPENING	IN	INCH	STOR	STORAGE
DR	DOOR	INSUL	INSULATION	STRUCT	STRUCTURAL
DWG(S)	DRAWING, DRAWINGS	INT	INTERIOR	SUSP	SUSPENDED
DWR	DRAWER	JAN	JANITOR	T	TEMPERED
E	EAST	JST	JOIST	TEL	TELEPHONE
EA	EXISTING	JT	JOINT	TO	TOP OF
EXT	EXTERIOR	KIT	FIRST AID KIT	TT	TOILET TISSUE DISPENSER
EIFS	EXTERIOR FINISH SYSTEM	KP	KICK PLATE	TYP	TYPICAL
EJ	EXPANSION JOINT	LAM	LAMINATE, LAMINATED	UNO	UNLESS NOTED OTHERWISE
ELEV	ELEVATION	LAV	LAVATORY	VCT	VINYL COMPOSITION TILE
ELEC	ELECTRIC, ELECTRICAL	LT	LIGHT	VERT	VERTICAL
ELEV	ELEVATOR	MACH	MACHINE	VEST	VESTIBULE
EMER	EMERGENCY	MATL	MATERIAL	W	WEST
ENCL	ENCLOSURE	MAX	MAXIMUM	W/	WITH
EQ	EQUAL	MECH	MECHANICAL	W/O	WITH OUT
EQUIP	EQUIPMENT	MEMB	MEMBRANE	WC	WATER CLOSET
EWC	ELECTRIC WATER COOLER	MFR	MANUFACTURER	WD	WOOD
EXH	EXHAUST	MIN	MINIMUM	WP	WATERPROOF
EXIST	EXISTING	MR	MIRROR	WT	WEIGHT
EXP	EXPANSION, EXPOSED	MISC	MISCELLANEOUS		
EXT	EXTERIOR	MO	MASONRY OPENING		
		MTD	MOUNTED		
		MTG	MEETING		
		MTNG	MOUNTING		
		MTL	METAL		
		MUL	MULLION		

ABBREVIATIONS J28

	EQUIPMENT TYPE		DETAIL INDICATOR
	KEYNOTE		ELEVATION TAG
	SPECIALTY TYPE		DETAIL NUMBER
	REVISION NUMBER		SHEET NUMBER
	BREAK LINE		EXTERIOR ELEVATION NUMBER
	CENTER LINE		EXTERIOR SECTION NUMBER
	COLUMN NUMBER		NORTH ARROW
	ELEVATION INDICATOR		

SYMBOLS LEGEND A28



GOLDEN SANDS
GENERAL CONTRACTORS



2000 SHAWNEE MISSION PARKWAY
STE 100 MISSION WOODS, KS 66205
TEL 816 502 1500 FAX 816 842 1878

REES MASILIONIS TURLEY ARCHITECTURE, LLC
MISSOURI CERTIFICATE OF AUTHORITY # 00915

MATTHEW MASILIONIS - ARCHITECT
MISSOURI # A-6005

I have prepared the drawings and assume responsibility for the sheets numbered with an "A" prefix for the project named below.
Other drawings and specifications attached for the above-mentioned project have been by and are the responsibility of the licensed engineer-whose stamp and firm appear on that sheet.
The Architect is not responsible for the design of the mechanical, electrical, plumbing, civil, landscaping, structural, signage (not specified), fire sprinkler or fire suppression systems, and does not take responsibility for the compliance of these areas with the laws of the above governmental entities. The architect is not responsible for materials, components or equipment, as well as the method in which they are installed on the project by others. The Architect is not liable or responsible for certification, during construction or upon completion of construction. The Architect is not responsible for improper operation due to faulty installation or product failure during construction or after completion of construction when operation has begun by the landlord or tenant.
The licensed professional whose stamp appears on sheets other than those specifically noted above shall be responsible for those items in paragraph three.

PROJECT
ARNOLD CROSSINGS WALK-UP ATM

ARNOLD CROSSROADS CENTER
3880 STATE ROUTE 141
ARNOLD, MISSOURI 63010

SHEET TITLE
COVER SHEET

PROJECT NUMBER
2019033.023

SHEET AUTHOR

CHECKED BY

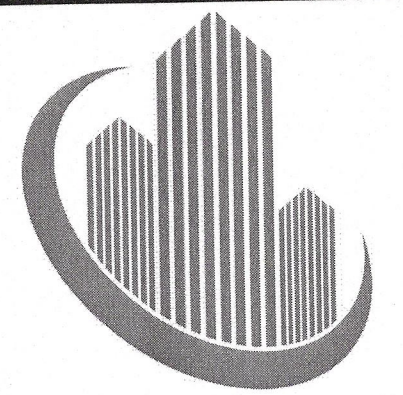
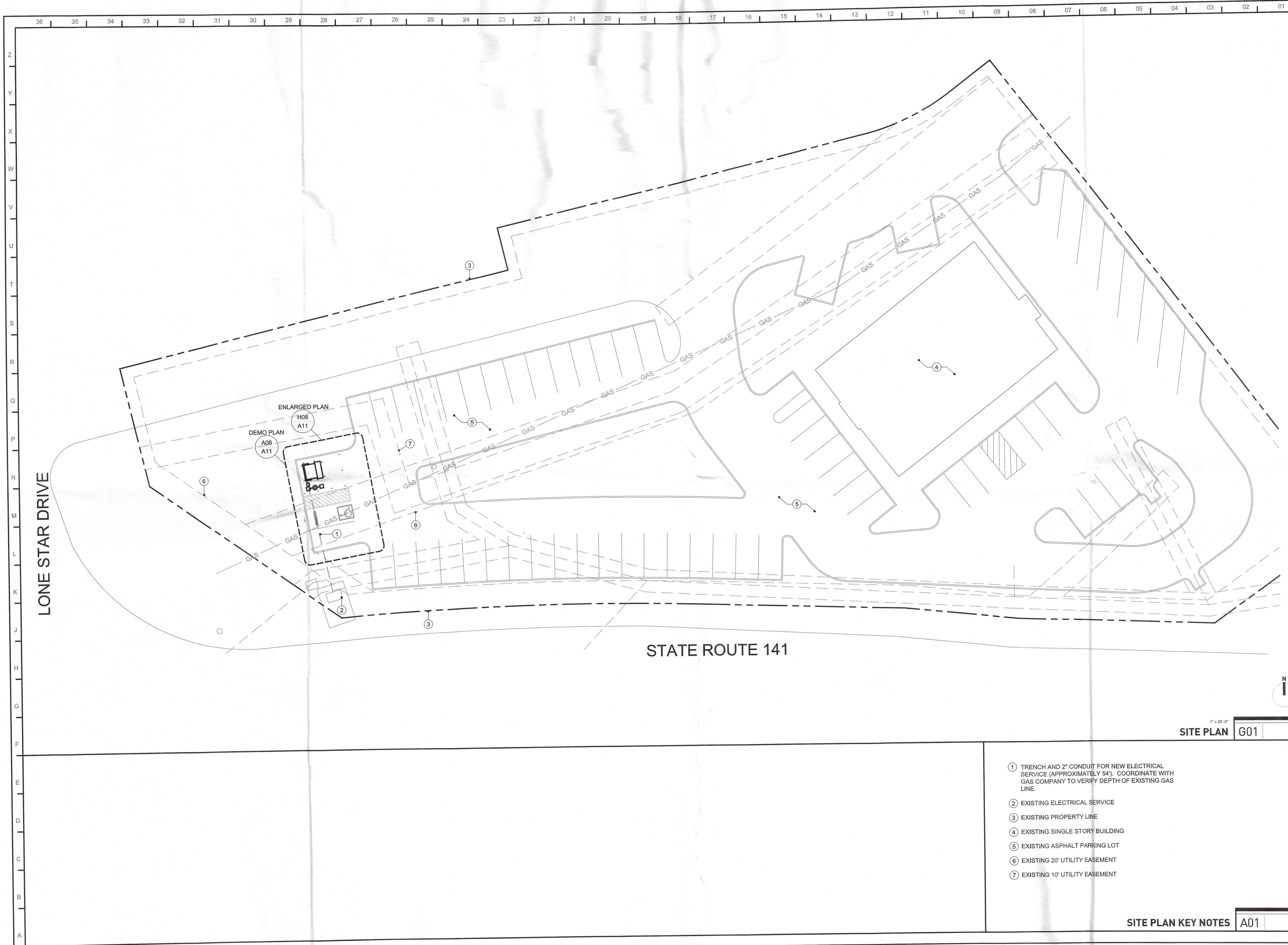
DATE
JUNE 25, 2019

© 2019 Rees Masilionis Turley Architecture, LLC
All rights reserved. No part of this document may be reproduced or stored in any form without the prior written authorization of Rees Masilionis Turley Architecture, LLC.

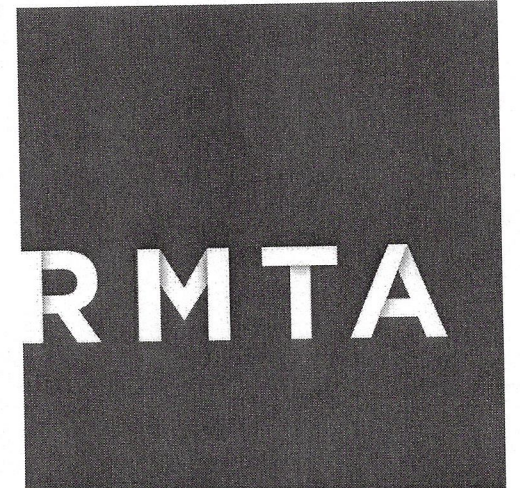
SHEET NUMBER

A00

RMTA.BIZ



GOLDEN SANDS
GENERAL CONTRACTORS



2000 SHAWNEE MISSION PARKWAY
STE 100 MISSION WOODS, KS 66205
TEL 816 502 1500 FAX 816 842 1878

REES MASLIONIS TURLEY ARCHITECTURE, LLC
MISSOURI CERTIFICATE OF AUTHORITY # 00918

MATTHEW MASLIONIS - ARCHITECT
MISSOURI # A-6005

I have prepared the drawings and assume responsibility for the sheets numbered with an "A" prefix for the project named below.

Other drawings and specifications attached for the above-mentioned project have been by and are the responsibility of the licensed engineer whose stamp and firm appear on that sheet.

The Architect is not responsible for the design of the mechanical, electrical, plumbing, civil, landscaping, structural, signage (not specified), fire sprinkler or the suppression systems; and does not take responsibility for the compliance of these areas with the laws of the above governmental entities. The architect is not responsible for materials, components or equipment, as well as the method in which they are installed on the project by others. The Architect is not hired or responsible for certification, during construction or upon completion of construction. The Architect is not responsible for improper operation due to faulty installation or product failure during construction or after completion of construction when operation has begun by the landlord or tenant.

The licensed professional whose stamp appears on sheets other than those specifically noted above shall be responsible for those items in paragraph three.

PROJECT

ARNOLD CROSSLINGS WALK-UP ATM

ARNOLD CROSSROADS CENTER
3880 STATE ROUTE 141
ARNOLD, MISSOURI 63010

SHEET TITLE
SITE PLAN

PROJECT NUMBER
2019033.023

SHEET AUTHOR
K. MILLER

CHECKED BY
R. BURDINE

DATE
JUNE 25, 2019

© 2019 Rees Maslions Turley Architecture, LLC
All rights reserved. No part of this document may be reproduced or stored in any form without the prior written authorization of Rees Maslions Turley Architecture, LLC.

SHEET NUMBER

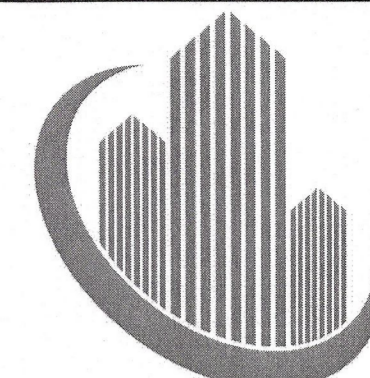
A10

RMTA.BIZ

1" = 20'-0"
SITE PLAN G01

- ① TRENCH AND 2" CONDUIT FOR NEW ELECTRICAL SERVICE (APPROXIMATELY 54'). COORDINATE WITH GAS COMPANY TO VERIFY DEPTH OF EXISTING GAS LINE.
- ② EXISTING ELECTRICAL SERVICE
- ③ EXISTING PROPERTY LINE
- ④ EXISTING SINGLE STORY BUILDING
- ⑤ EXISTING ASPHALT PARKING LOT
- ⑥ EXISTING 20' UTILITY EASEMENT
- ⑦ EXISTING 10' UTILITY EASEMENT

SITE PLAN KEY NOTES A01



I have prepared the drawings and assume responsibility for the sheets numbered with an "A" prefix for the project named below.
Other drawings and specifications attached for the above-mentioned project have been by and are the responsibility of the licensed engineer whose stamp and firm appear on that sheet.
The Architect is not responsible for the design of the mechanical, electrical, plumbing, civil, landscaping, structural, signage (not specified), the sprinkler or fire suppression systems; and does not take responsibility for the compliance of these areas with the laws of the above governmental entities. The architect is not responsible for materials, components or equipment, as well as the method in which they are installed on the project by others. The Architect is not hired or responsible for certification, during construction or upon completion of construction. The Architect is not responsible for improper operation due to faulty installation or product failure during construction or after completion of construction when operation has begun by the landlord or tenant.
The licensed professional whose stamp appears on sheets other than those specifically noted above shall be responsible for those items in paragraph three.

PROJECT

ARNOLD CROSSROADS WALK-UP ATM

ARNOLD CROSSROADS CENTER
3880 STATE ROUTE 141
ARNOLD, MISSOURI 63010

SHEET TITLE
ENLARGED PLANS AND ELEVATIONS

PROJECT NUMBER
2019033.023

SHEET AUTHOR
K. MILLER

CHECKED BY
R. BURDINE

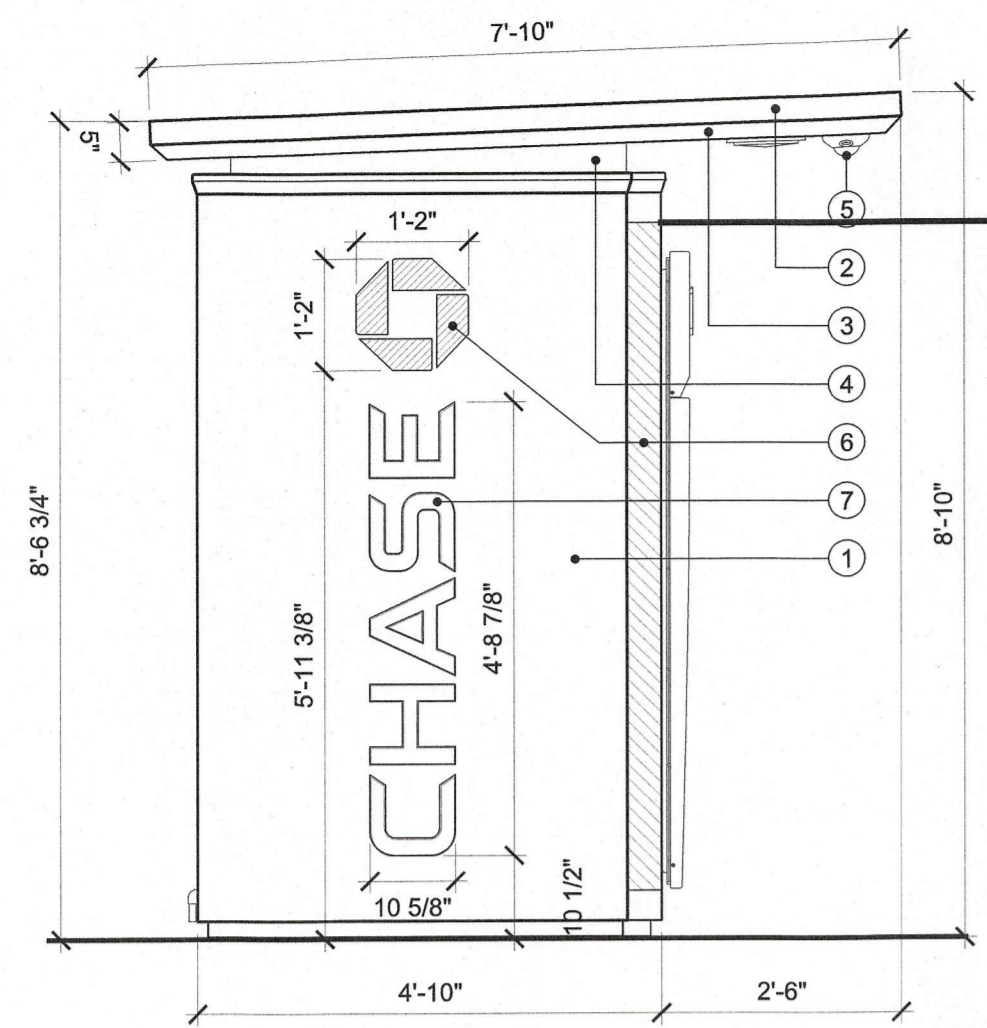
DATE
JUNE 25, 2019

© 2019 Rees Masiolojnis Turley Architects, LLC
All rights reserved. No part of this document may be reproduced or stored in any form without the prior written authorization of Rees Masiolojnis Turley Architects, LLC.

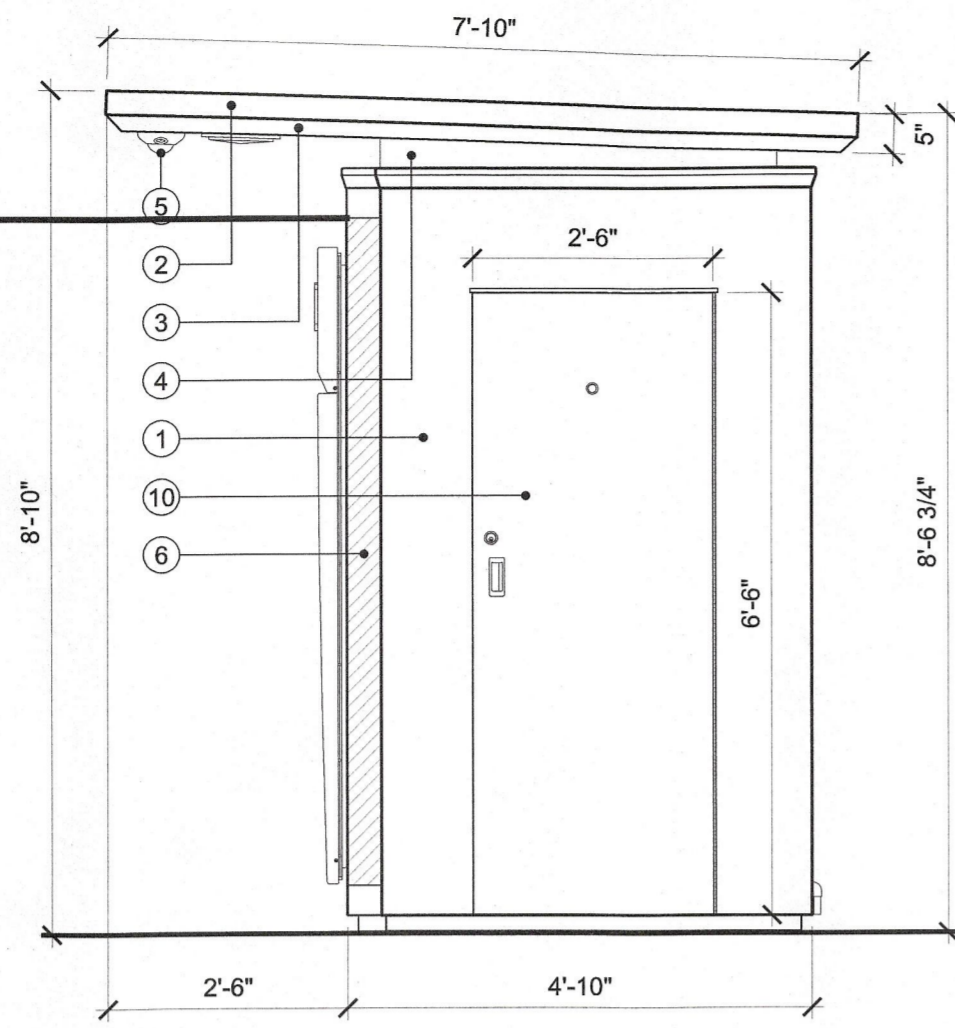
SHEET NUMBER

A11

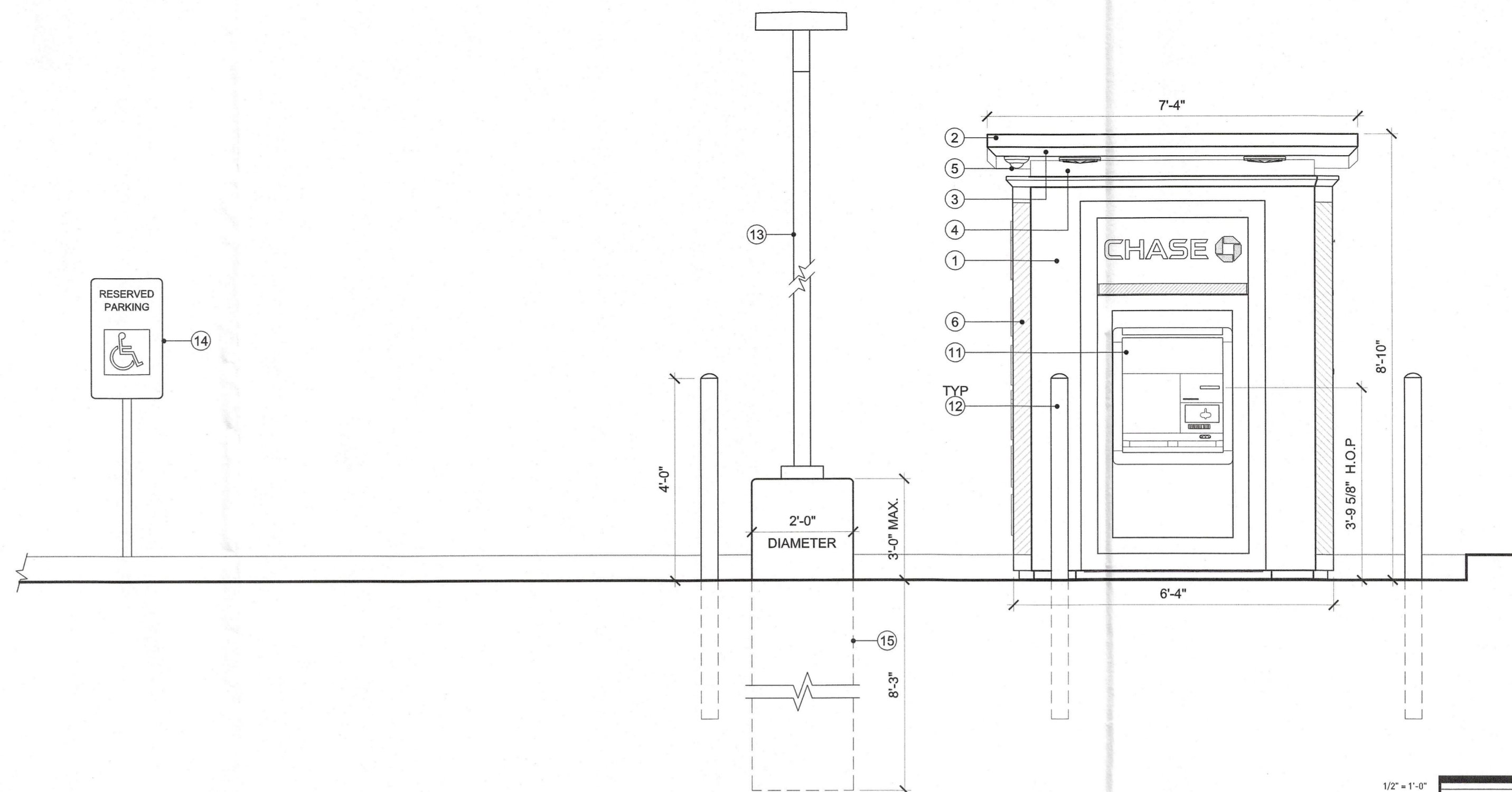
RMTA.BIZ



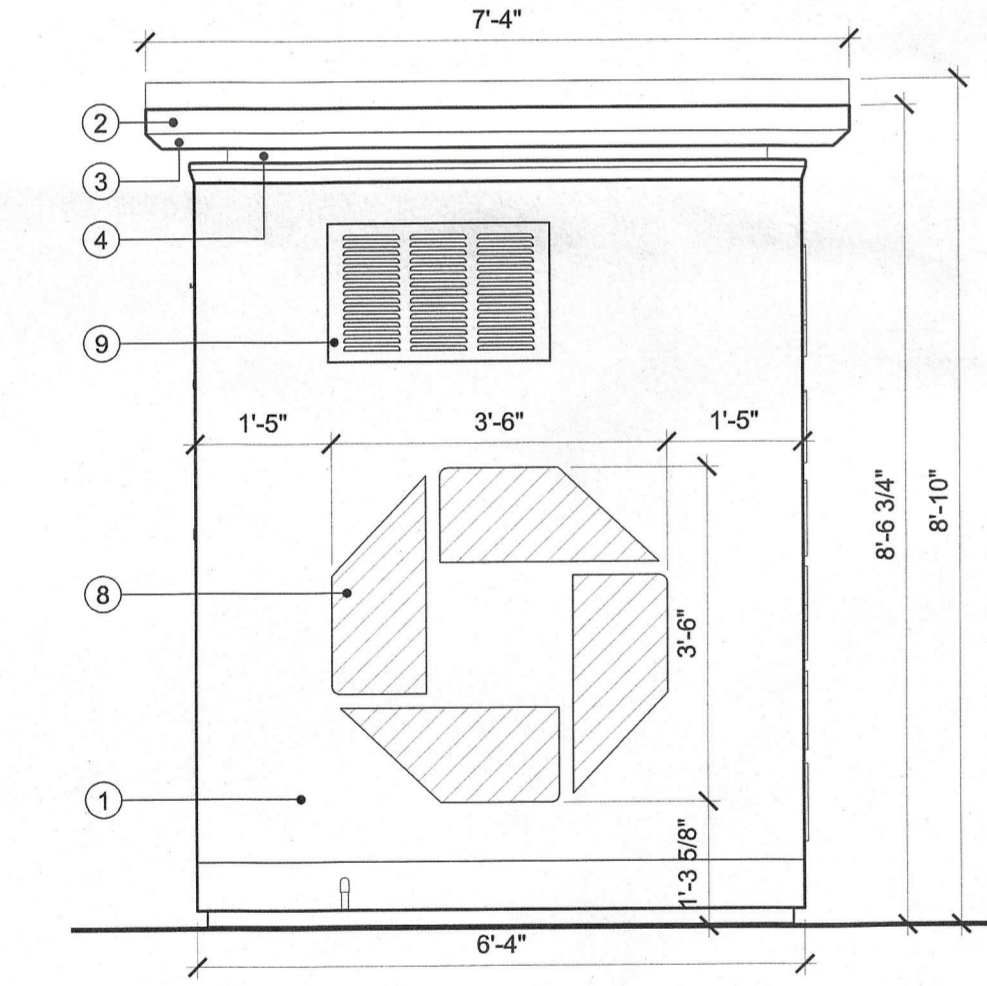
1/2" = 1'-0"
SIDE ELEVATION Q29



1/2" = 1'-0"
SIDE ELEVATION Q21



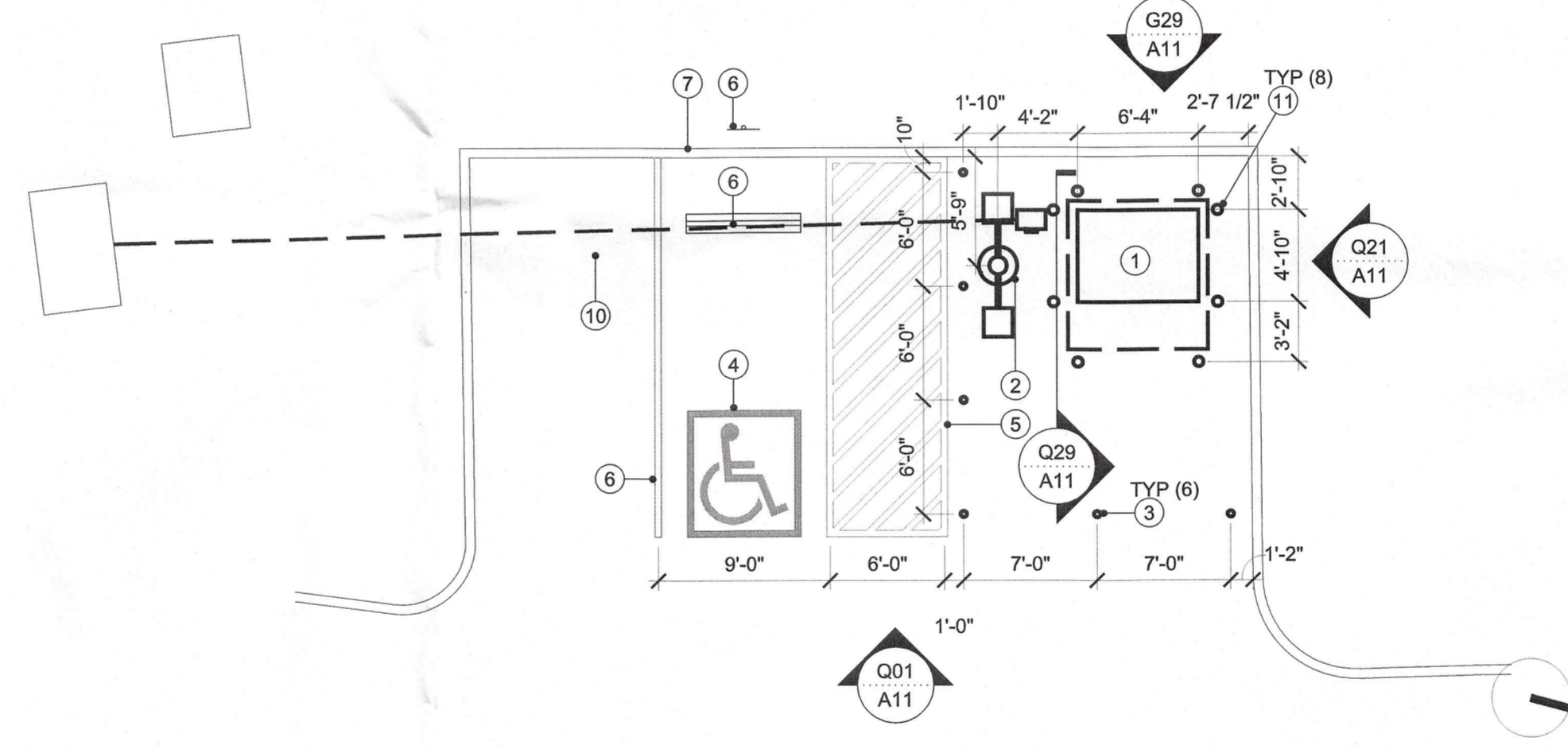
1/2" = 1'-0"
FRONT ELEVATION Q01



1/2" = 1'-0"
BACK ELEVATION G29

- ① ATM BUILDING SKIN - PAINT TO MATCH MATTHEWS #MP-19891 CHASE NICKEL GLOSS FINISH
- ② ATM CANOPY - PAINT TO MATCH MATTHEWS #MP-19891 CHASE NICKEL GLOSS FINISH
- ③ ATM CANOPY BEVEL - PAINT TO MATCH MATTHEWS #MP-00366 CHASE BLUE SEMI-GLOSS FINISH
- ④ CANOPY COLLAR - PAINT TO MATCH MATTHEWS #MP-18248 CHASE DARK NICKEL GLOSS FINISH
- ⑤ DOME SECURITY CAMERA
- ⑥ CLEAR ACRYLIC LENS WITH BLUE VINYL
- ⑦ CLEAR ACRYLIC LENS WITH WHITE VINYL
- ⑧ OPAQUE BLUE VINYL LOGO
- ⑨ HVAC GRILL PAINTED TO MATCH ATM BUILDING SKIN
- ⑩ ACCESS DOOR PAINTED TO MATCH ATM BUILDING SKIN
- ⑪ ATM WITH SECURITY ENCLOSURE
- ⑫ BOLLARD. RE: R01/A21
- ⑬ 15' TALL LIGHT STANDARD. RE: A01/A21
- ⑭ CODE REQUIRED HANDICAP PARKING SIGNAGE
- ⑮ CONCRETE FOUNDATIONS. EASE ALL EXPOSED EDGES

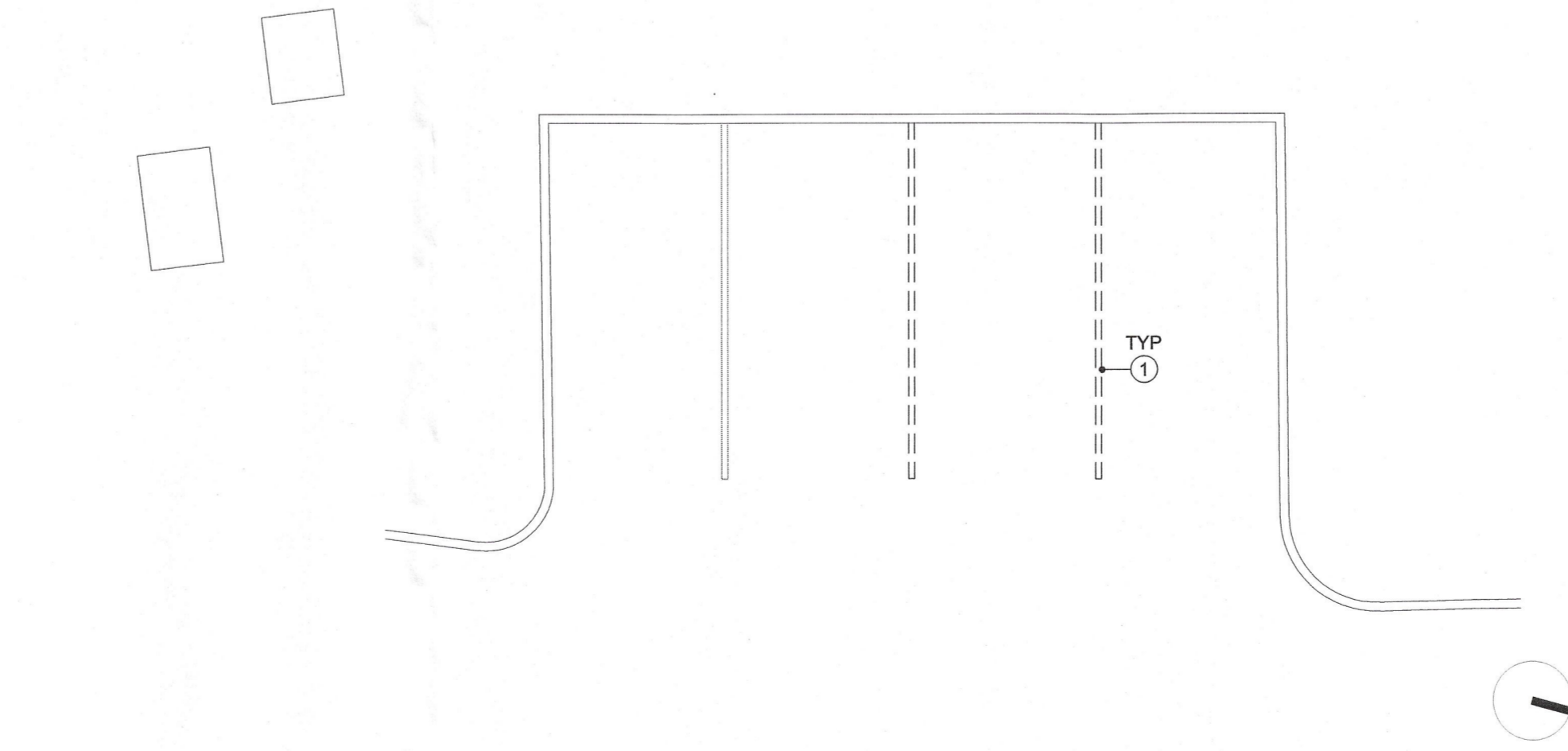
ELEVATION KEY NOTES G22



1/8" = 1'-0"
ENLARGED SITE PLAN H08

- ① LOCATION OF NEW WALK-UP ATM MACHINE
- ② 25' TALL LIGHT STANDARD. RE: A01/A21
- ③ 4" BOLLARD. RE: R01/A31
- ④ CODE REQUIRED PAINTED HANDICAP PARKING SYMBOL
- ⑤ 4" TRAFFIC WHITE PAINT STRIPING
- ⑥ HANDICAP PARKING SIGNAGE
- ⑦ EXISTING CURB AND GUTTER
- ⑧ CONCRETE PARKING STOP
- ⑨ EXISTING PARKING STRIPE
- ⑩ TRENCH AND 2" CONDUIT PER SITE PLAN (APPROX. 54')
- ⑪ 6" BOLLARD. RE: R01/A31

PLAN KEY NOTES H01



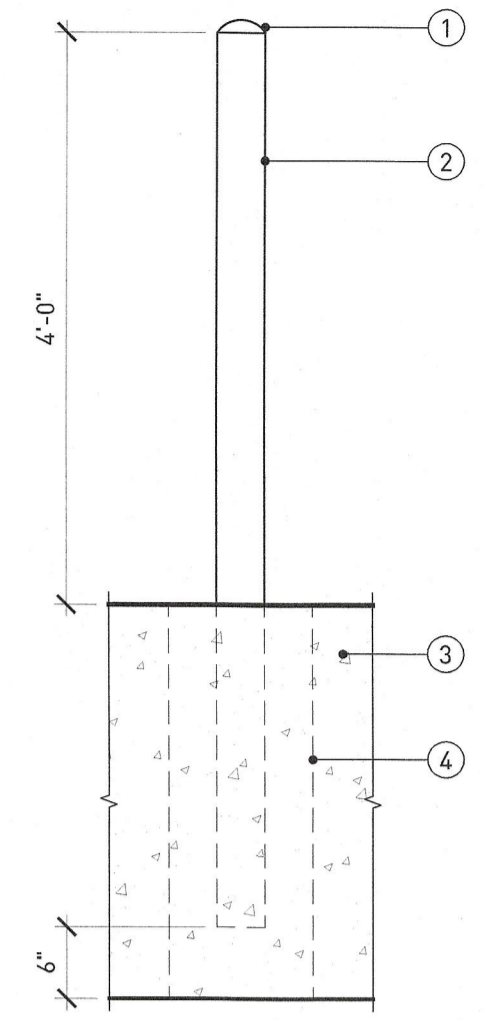
1/8" = 1'-0"
ENLARGED DEMO PLAN A08

- ① PAINT OVER EXISTING PARKING STRIPING WITH BLACK PAINT

DEMO PLAN KEY NOTES A01

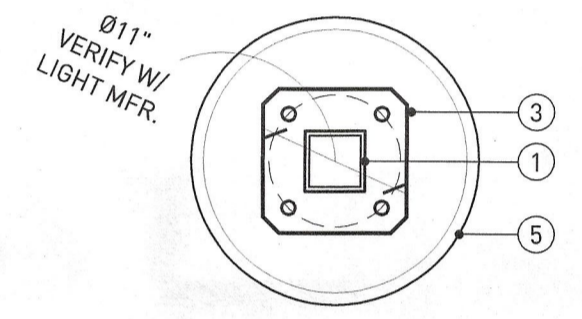
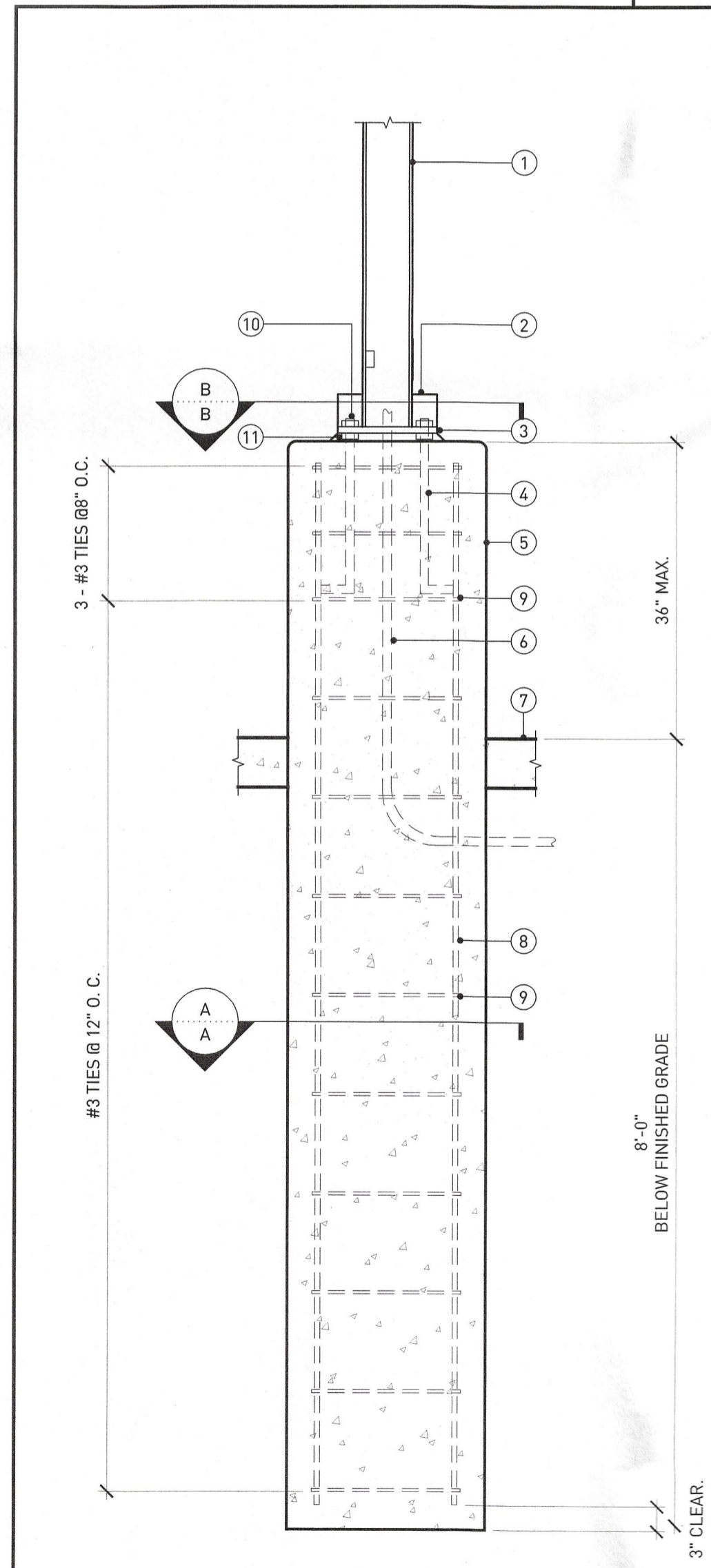
36 35 34 33 32 31 30 29 28 27 26 25 24 23 22 21 20 19 18 17 16 15 14 13 12 11 10 09 08 07 06 05 04 03 02 01

Z
Y
X
W
V
U
T
S
R
Q
P
N
M
L
K
J
H
G
F
E
D
C
B
A

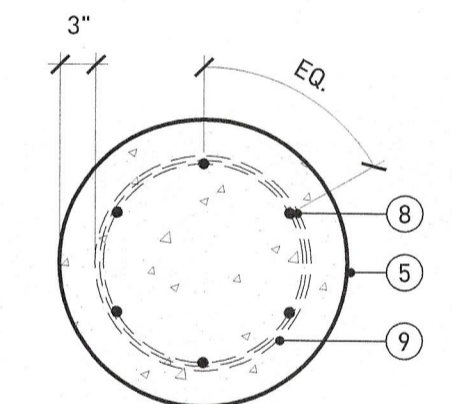


- ① ROUNDED CONCRETE CAP
- ② 4" OR 6" DIA. STANDARD STEEL PIPE [RE: PLAN FOR SIZE]. FILL WITH CONCRETE. PROVIDE CHASE BLUE POLYMER COVER
- ③ CONCRETE FOOTINGS. RE: A01/A21
- ④ IF BOLLARD IS NOT IN MAIN ISLAND FOOTING PROVIDE 12" DIAMETER (MIN.), 2'-0" DEEP (MIN.) CONCRETE FOOTING

3/4" = 1'-0"
BOLLARD DETAIL R01



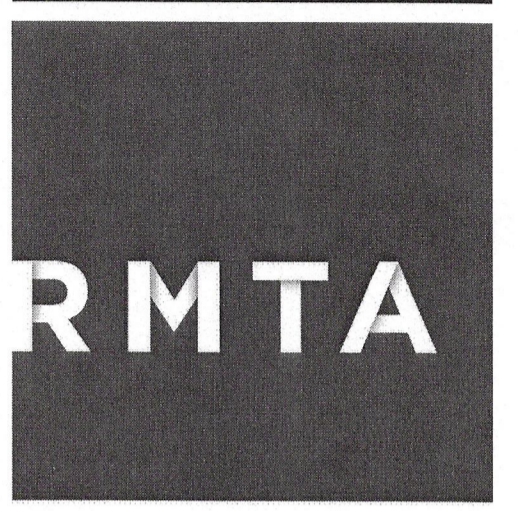
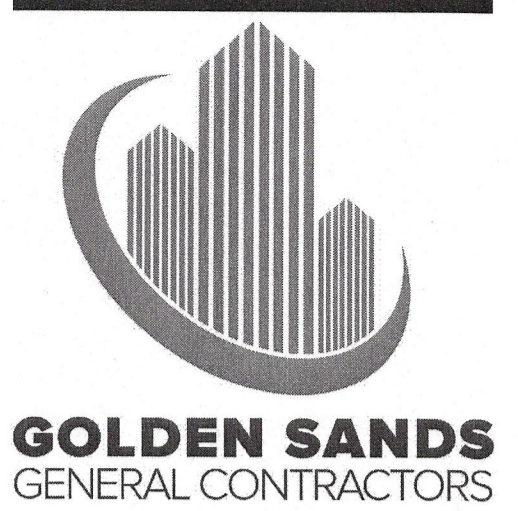
SECTION B-B



SECTION A-A

- ① THREE-HEAD 15' LIGHT POLE. RE: ELECTRICAL
- ② BASE COVER, BY LIGHT MANUFACTURER
- ③ BASE PLATE, BY LIGHT MANUFACTURER
- ④ FOUR (4) 5/8" DIA. X 24" (A307) ANCHOR BOLTS
- ⑤ 24" DIAMETER CONCRETE BASE, 3000 PSI CONCRETE (MIN.). SMOOTH SACK FINISH
- ⑥ 3/4" CONDUIT. RE: ELECTRICAL
- ⑦ TOP OF CONCRETE ISLAND
- ⑧ SIX (6) #6 REBAR (VERTICAL)
- ⑨ #3 WIRE TIES
- ⑩ LOCK NUT AND WASHER
- ⑪ LEVELING NUT AND WASHER

3/4" = 1'-0"
LIGHT POLE DETAILS A01



2000 SHAWNEE MISSION PARKWAY
STE 100 MISSION WOODS, KS 66205
TEL 816 502 1500 FAX 816 842 1878

REES MASILIONIS TURLEY ARCHITECTURE, LLC
MISSOURI CERTIFICATE OF AUTHORITY # 00918

MATTHEW MASILIONIS - ARCHITECT
MISSOURI # A-6005

I have prepared the drawings and assume responsibility for the sheets numbered with an "A" prefix for the project named below.
Other drawings and specifications attached for the above-mentioned project have been by and are the responsibility of the licensed engineer whose stamp and firm appear on that sheet.
The Architect is not responsible for the design of the mechanical, electrical, plumbing, civil, landscaping, structural, signage (not specified), fire sprinkler or fire suppression systems, and does not take responsibility for the compliance of these areas with the laws of the above governmental entities. The architect is not responsible for materials, components or equipment, as well as the method in which they are installed on the project by others. The Architect is not hired or responsible for certification, during construction or upon completion of construction. The Architect is not responsible for improper operation due to faulty installation or product failure during construction or after completion of construction when operation has begun by the landowner or tenant.
The licensed professional whose stamp appears on sheets other than those specifically noted above shall be responsible for those items in paragraph three.

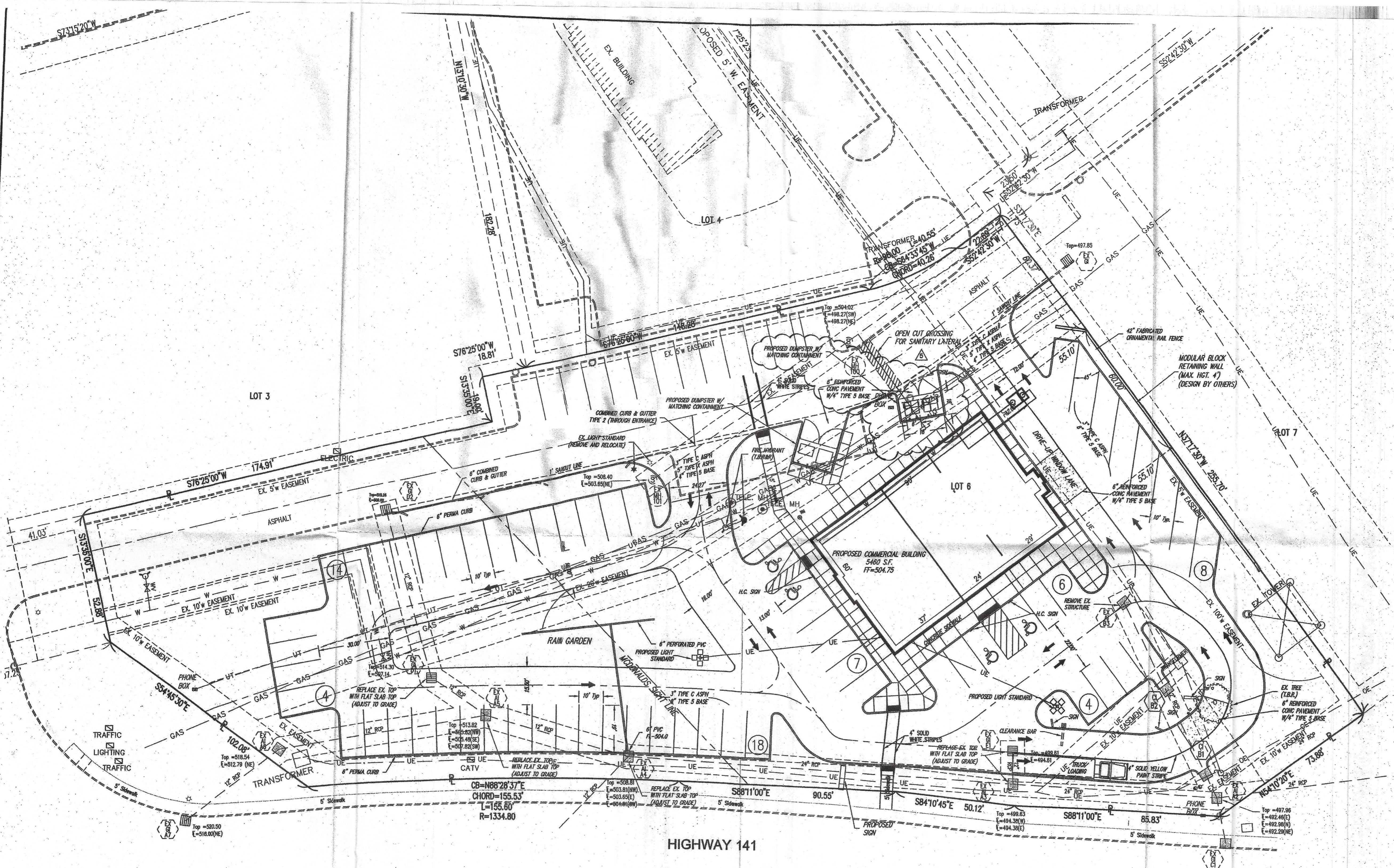
PROJECT
ARNOLD CROSSLINGS WALK-UP ATM
ARNOLD CROSSROADS CENTER
3880 STATE ROUTE 141
ARNOLD, MISSOURI 63010

SHEET TITLE
DETAILS

PROJECT NUMBER
2019033.022
SHEET AUTHOR
K. MILLER
CHECKED BY
R. BURDINE
DATE
JUNE 25, 2019

© 2019 Rees Masilionis Turley Architecture, LLC
All rights reserved. No part of the document may be reproduced or utilized in any form without the prior written authorization of Rees Masilionis Turley Architecture, LLC.

SHEET NUMBER
A21
RMTA.BIZ



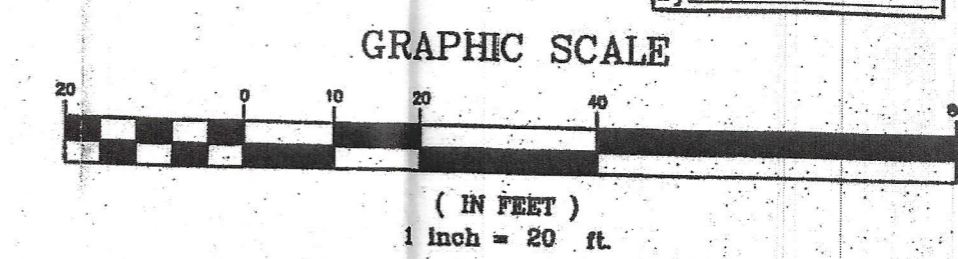
PARKING REQUIREMENTS:

SITE AREA +/- 1.46 ACRES
 BUILDING 5,460 SQ. FT.
 PARKING PROVIDED 53 SPACES Regular
 4 SPACES Handicap
 1 TRUCK LOADING (10'x60')

57 SPACES SHOWN + 1 LOADING SPACE

PARKING REQUIRED (4.25sp/1,000 sq. ft.) 23 SPACES

RECEIVED
 JAN 10 2012



DATE	REVISIONS
04-20-11	1 REVISION FOR PLANNING AND ZONING COMMENTS
04-20-11	2 REVISION FOR CITY OF ARNOLD COMMENTS
04-20-11	3 REVISION FOR COMMUNITY DEVELOPMENT COMMENTS
04-20-11	4 REVISION FOR CHINA TOWN
04-20-11	5 ADD STANDARD RECYCLING COMPARTMENT
04-20-11	6
04-20-11	7
04-20-11	8

STATEMENT OF RESPONSIBILITY
 I HEREBY CONFIRM THE DOCUMENT HEREIN TO BE AUTHENTICATED BY MY SEAL AND RESTRICTED TO THIS SITE. I HEREBY DISCLAIM ANY RESPONSIBILITY FOR ALL OTHER PLANS, SPECIFICATIONS, ESTIMATES, REPORTS, SURVEYS OR ANY OTHER DOCUMENTS OR INSTRUMENTS OR FOR THE ACCURACY OF THE INFORMATION PROVIDED HEREIN OR FOR ANY OTHER PART OR PARTS OF THIS PROJECT.

DOUGLAS S. BJORNSTAD
 PROFESSIONAL ENGINEER
 NUMBER PE-2002024006
 CIVIL ENGINEERING

PREPARED FOR:
Jones Realty
 P.O. Box 528
 St. Albans, MO 63073
 (636) 458-0545

PREPARED BY:
Land Services LLC
TROMPET
 575 Boulder Rd., Ste. 105
 St. Louis, Missouri 63026
 636.326.5531 Office / 636.326.5570 Fax

PROJECT NAME:
Lot 6 Arnold Crossroads Plaza

SHEET TITLE:
Site Plan

PROJECT NUMBER:
10 10 0003

SHEET	DATE
2	03-04-11
DRAWN BY: LDG	
CHECKED BY: DSB	
SCALE: 1"=20'	OF 10

Drawing name: 2 Land Services Projects\2011\10100003_Arnold Crossroads Lot 6\10100003_Site Plan.dwg
 Printed on: Jan 10, 2012 - 11:48am
 Plotted by: grom - Copyright 2010 Trompet Land Services LLC